

LEA Name : Reading SD
Address : 800 Washington St
Reading , PA 19601

County : Berks
AUN Number : 114067002
LEA Type : SD


**Annual Financial Report
Accuracy Certification Statement**

For Fiscal Year Ending
6/30/2019

Pennsylvania Department of Education
&
Office of Comptroller Operations

PDE-2056: Intermediate Unit
PDE-2057: School District, AVTS/CTC, Charter School,
and Special Program Jointure


CERTIFICATION: By signing this page I agree that the electronic data submitted is a complete and accurate statement of the financial operations and status of the local education agency for the fiscal year. It has been prepared in accordance with generally accepted accounting principles and established Commonwealth of PA reporting guidelines.



Chief School Administrator Signature

1.15.2020

Date



Board Secretary Signature

1/15/2020

Date

Christian Lellig

Contact Person

(484)258-7054 Ext :

Contact Person Telephone Number

lelligc@readingsd.org

Contact Person E-mail Address

(610)371-5833

Contact Person Fax Number

Audit Certification
Annual Financial Report:
For Fiscal Year Ending **6/30/2019**
(Pursuant to PA School Code Section 218(b))

LEA Name : Reading SD
AUN Number : 114067002
County : Berks

Audit Certification Due: 12/31/2019

This certification is applicable to the Annual Financial Report data submitted through the Consolidated Financial Reporting System on: 1/15/2020
Date

Auditing Firm:

Maillie

CERTIFICATION: By signing this page I agree that the financial statements of the school have been properly audited as noted above pursuant to Article XXIV, and in the auditor's professional opinion, the Annual Financial Report (PDE-2057) submitted on the date referenced is materially consistent with the audited financial statements.

Chief School Administrator


Signature

1/15/2020
Date

Board Secretary


Signature

1/15/2020
Date

Christian Lellig

Contact Person

lelligc@readingsd.org

Contact Person E-mail Address

(484)258-7054

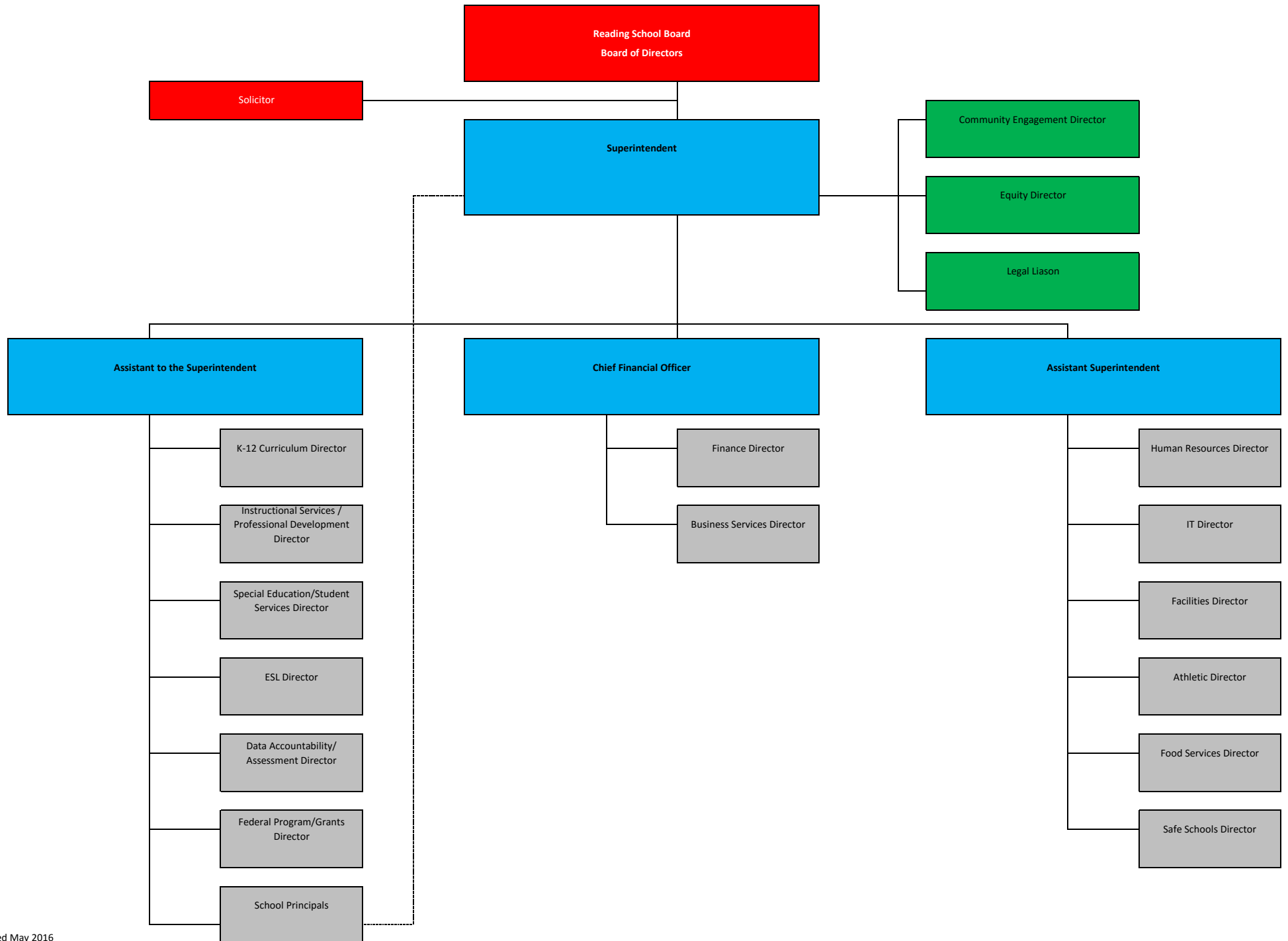
Ext :

Contact Person Telephone Number

(610)371-5833

Contact Person Fax Number

READING SCHOOL DISTRICT
LEADERSHIP TEAM ORGANIZATIONAL CHART



<u>Val Number</u>	<u>Description</u>	<u>Justification</u>
11075	Data has been reported on the NAG within Fund #28 – Other Comptroller Approved Special Revenue Fund. Please identify the title and function of this fund.	Fund #28 is the Reading School District's Special Revenue - Student Activity Fund for all Elementary Schools.
11085	Data has been reported on the REG within Fund #28 – Other Comptroller Approved Special Revenue Fund. Please identify the title and function of this fund.	Fund #28 is the Reading School District's Special Revenue - Student Activity Fund for all Elementary Schools.
50160	SOIN: All Governmental Fund General Obligation Bonds must include an amount for Interest Paid during Fiscal Year. Correct data or enter a justification.	Capital Appreciation Bonds are issued as "discount bonds" from their principal face amount, they do not pay periodic interest and they mature at their principal face value.
50180	SOIN: All Governmental Fund General Obligation Bonds must include an amount for Amount Due Within One Year (Principal and Interest). Correct data or enter a justification.	Capital Appreciation Bonds are issued as "discount bonds" from their principal face amount, they do not pay periodic interest and they mature at their principal face value.
50270	SOIN: Accreted Interest Data was not entered for a Capital Appreciation Bond (General Obligation Bond - CAB or Authority Building Obligation - CAB). Use the SOIN data entry screen to correct or enter a justification.	Capital Appreciation Bonds are issued as "discount bonds" from their principal face amount, they do not pay periodic interest and they mature at their principal face value.
50440	SESS - 2260 Instruction and Curriculum Development Services: SESS Schedule amounts for Special Education vary from prior year by 40% or more. Correct the data or enter a justification. SESS Schedule 2260: \$60,269.30 Prior Year SESS Schedule 2260: \$33,819.60	Instruction and Curriculum Development Services as a percentage of the total cost increase 5% from prior year total.
50450	SESS - 2350 Legal and Accounting Services: SESS Schedule amounts for Special Education vary from prior year by 40% or more. Correct the data or enter a justification. SESS Schedule 2350: \$165,287.48 Prior Year SESS Schedule 2350: \$297,774.37	Reviewed Legal and Accounting Services, however the increase is due to additional legal representation required by the Reading School District.

Amounts Expressed in Whole Dollars		<u>General Fund</u> <u>(10)</u>	<u>Public Purpose Trust</u> <u>(27)</u>	<u>Other Compt Approved</u> <u>(28)</u>	<u>Athletic / Activity</u> <u>(29)</u>	<u>Capital Reserve (690.</u> <u>1850)</u> <u>(31)</u>
Assets And Deferred Outflows Of Resources						
Assets						
0100	Cash and Cash Equivalents	68,675,814		138,263		
0110	Investments	26,577,129				
0120	Taxes Receivable	7,511,717				
0130	Due From Other Funds	3,164,242				
0141	Due From Other Governments	2,782,089				
0142	State Revenue Receivable	13,498,569				
0143	Federal Revenue Receivable	4,431,638				
0145	Other Intergovernmental Revenue Receivable					
0146	Due from Primary Government					
0147	Due from Component Unit					
0150	Other Receivables	946,679				
0170	Inventories					
0180	Prepaid Expenses (Expenditures)	1,757				
0190	Other Current Assets					
Total Assets		\$127,589,634		\$138,263		
0910	Deferred Outflows of Resources					
Total Assets And Deferred Outflows Of Resources		\$127,589,634		\$138,263		

LEA : 114067002 Reading SD

Printed 2/10/2020 9:12:34 AM

Amounts Expressed in Whole Dollars		<u>Capital Reserve (1431)</u> <u>(32)</u>	<u>Other Capital Projects</u> <u>Fund</u> <u>(39)</u>	<u>Debt Service</u> <u>(40)</u>	<u>Permanent</u> <u>(90)</u>	<u>Total Governmental</u> <u>Funds</u>
Assets And Deferred Outflows Of Resources						
Assets						
0100	Cash and Cash Equivalents					68,814,077
0110	Investments		3,640,428			30,217,557
0120	Taxes Receivable					7,511,717
0130	Due From Other Funds		12,000,000	5,000,000		20,164,242
0141	Due From Other Governments					2,782,089
0142	State Revenue Receivable					13,498,569
0143	Federal Revenue Receivable					4,431,638
0145	Other Intergovernmental Revenue Receivable					
0146	Due from Primary Government					
0147	Due from Component Unit					
0150	Other Receivables					946,679
0170	Inventories					
0180	Prepaid Expenses (Expenditures)					1,757
0190	Other Current Assets					
Total Assets			\$15,640,428	\$5,000,000		\$148,368,325
0910	Deferred Outflows of Resources					
Total Assets And Deferred Outflows Of Resources			\$15,640,428	\$5,000,000		\$148,368,325

Amounts Expressed in Whole Dollars	<u>General Fund</u> <u>(10)</u>	<u>Public Purpose Trust</u> <u>(27)</u>	<u>Other Compt Approved</u> <u>(28)</u>	<u>Athletic / Activity</u> <u>(29)</u>	<u>Capital Reserve (690.</u> <u>1850)</u> <u>(31)</u>
Liabilities And Deferred Inflows Of Resources And Fund Balances					
Liabilities					
0400 Due to Other Funds	20,392,327		1,800		
0411 Due to Other Governments					
0412 Due to Primary Government					
0413 Due to Component Unit					
0420 Accounts Payable	14,455,445		18,536		
0430 Contracts Payable					
0440 Current Portion of Long-Term Debt					
0450 Short-Term Payables					
0461 Accrued Salaries and Benefits					
0462 Payroll Deductions and Withholding	28,454,404				
0480 Unearned Revenues	948,269				
0490 Other Current Liabilities					
Total Liabilities	\$64,250,445		\$20,336		
0950 Deferred Inflows of Resources	6,198,817				
Fund Balances					
0810 Nonspendable Fund Balance					
0820 Restricted Fund Balance			117,927		
0830 Committed Fund Balance					
0840 Assigned Fund Balance	18,914,442				
0850 Unassigned Fund Balance	38,225,930				
Total Fund Balances	\$57,140,372		\$117,927		
Total Liabilities, Deferred Inflows Of Resources And Fund Balances	\$127,589,634		\$138,263		

Amounts Expressed in Whole Dollars		<u>Capital Reserve (1431)</u> <u>(32)</u>	<u>Other Capital Projects</u> <u>Fund</u> <u>(39)</u>	<u>Debt Service</u> <u>(40)</u>	<u>Permanent</u> <u>(90)</u>	<u>Total Governmental</u> <u>Funds</u>
Liabilities And Deferred Inflows Of Resources And Fund Balances						
Liabilities						
0400	Due to Other Funds					20,394,127
0411	Due to Other Governments					
0412	Due to Primary Government					
0413	Due to Component Unit					
0420	Accounts Payable					14,473,981
0430	Contracts Payable					
0440	Current Portion of Long-Term Debt					
0450	Short-Term Payables					
0461	Accrued Salaries and Benefits					
0462	Payroll Deductions and Withholding					28,454,404
0480	Unearned Revenues					948,269
0490	Other Current Liabilities					
Total Liabilities						\$64,270,781
0950	Deferred Inflows of Resources					6,198,817
Fund Balances						
0810	Nonspendable Fund Balance					
0820	Restricted Fund Balance		3,640,428			3,758,355
0830	Committed Fund Balance					
0840	Assigned Fund Balance		12,000,000	5,000,000		35,914,442
0850	Unassigned Fund Balance					38,225,930
Total Fund Balances			\$15,640,428	\$5,000,000		\$77,898,727
Total Liabilities, Deferred Inflows Of Resources And Fund Balances			\$15,640,428	\$5,000,000		\$148,368,325

LEA : 114067002 Reading SD

Printed 2/10/2020 9:12:40 AM

Amounts Expressed in Whole Dollars	<u>General Fund</u> <u>(10)</u>	<u>Public Purpose Trust</u> <u>(27)</u>	<u>Other Compt Approved</u> <u>(28)</u>	<u>Athletic / Activity</u> <u>(29)</u>	<u>Capital Reserve (690.</u> <u>1850)</u> <u>(31)</u>
Revenues					
6000 Revenue from Local Sources	47,972,176		144,229		
7000 Revenue from State Sources	202,182,382				
8000 Revenue from Federal Sources	21,400,934				
Total Revenues	\$271,555,492		\$144,229		
Expenditures					
1000 Instruction	159,187,807				
2000 Support Services	75,863,965				
3000 Operation of Non-Instructional Services	3,067,535		128,521		
4000 Facilities Acquisition, Construction and Improvement Services	5,487,716				
5110 Debt Service	24,063,485				
5130 Refund of Prior Year Revenues / Receipts	3,237				
Total Expenditures	\$267,673,745		\$128,521		
Excess (Deficiency) Of Revenues Over Expenditures	\$3,881,747		\$15,708		
Other Financing Sources (Uses)					
9110 Face Value of Bonds Issued					
9120 Proceeds from Refunding of Bonds					
9130 Bond Premiums					
9200 Proceeds from Extended-Term Financing					
9300 Interfund Transfers - IN	631,228				
9400 Sale of or Compensation for Loss of Fixed Assets	5,037				
9710 Transfers from Component Units					
9720 Transfers from Primary Governments					
9910 Other Financing Sources Not Listed in the 9000 Series					
9990 Insurance Recoveries	11,271				
5120 Debt Service – Refunded Bonds					
5150 Bond Discounts					
5200 Interfund Transfers – Out	17,000,000				
5300 Transfers Out to Component Units/Primary Governments					
Total Other Financing Sources (Uses)	(\$16,352,464)				

LEA : 114067002 Reading SD

Printed 2/10/2020 9:12:40 AM

Amounts Expressed in Whole Dollars		<u>Capital Reserve (1431</u> <u>(32)</u>	<u>Other Capital Projects</u> <u>Fund</u> <u>(39)</u>	<u>Debt Service</u> <u>(40)</u>	<u>Permanent</u> <u>(90)</u>	<u>Total Governmental</u> <u>Funds</u>
Revenues						
6000	Revenue from Local Sources		83,474			48,199,879
7000	Revenue from State Sources					202,182,382
8000	Revenue from Federal Sources					21,400,934
Total Revenues			\$83,474			\$271,783,195
Expenditures						
1000	Instruction					159,187,807
2000	Support Services					75,863,965
3000	Operation of Non-Instructional Services					3,196,056
4000	Facilities Acquisition, Construction and Improvement Services					5,487,716
5110	Debt Service					24,063,485
5130	Refund of Prior Year Revenues / Receipts					3,237
Total Expenditures						\$267,802,266
Excess (Deficiency) Of Revenues Over Expenditures			\$83,474			\$3,980,929
Other Financing Sources (Uses)						
9110	Face Value of Bonds Issued					
9120	Proceeds from Refunding of Bonds					
9130	Bond Premiums					
9200	Proceeds from Extended-Term Financing					
9300	Interfund Transfers - IN		12,000,000	5,000,000		17,631,228
9400	Sale of or Compensation for Loss of Fixed Assets					5,037
9710	Transfers from Component Units					
9720	Transfers from Primary Governments					
9910	Other Financing Sources Not Listed in the 9000 Series					
9990	Insurance Recoveries					11,271
5120	Debt Service – Refunded Bonds					
5150	Bond Discounts					
5200	Interfund Transfers – Out					17,000,000
5300	Transfers Out to Component Units/Primary Governments					
Total Other Financing Sources (Uses)			\$12,000,000	\$5,000,000		\$647,536

Amounts Expressed in Whole Dollars		<u>General Fund</u> <u>(10)</u>	<u>Public Purpose Trust</u> <u>(27)</u>	<u>Other Compt Approved</u> <u>(28)</u>	<u>Athletic / Activity</u> <u>(29)</u>	<u>Capital Reserve</u> <u>(690.</u> <u>1850)</u> <u>(31)</u>
Special And Extraordinary Items						
9920	Special Items – Gains					
9930	Extraordinary Items – Gains					
5520	Special Items – Losses					
5530	Extraordinary Items – Losses					
Net Change In Fund Balances		(\$12,470,717)		\$15,708		
Fund Balance						
0001	Fund Balance - Beginning of Fiscal Year	69,611,089		102,220		
Fund Balance - End Of Year		\$57,140,372		\$117,928		

Amounts Expressed in Whole Dollars		<u>Capital Reserve (1431)</u> <u>(32)</u>	<u>Other Capital Projects</u> <u>Fund</u> <u>(39)</u>	<u>Debt Service</u> <u>(40)</u>	<u>Permanent</u> <u>(90)</u>	<u>Total Governmental</u> <u>Funds</u>
Special And Extraordinary Items						
9920 Special Items – Gains						
9930 Extraordinary Items – Gains						
5520 Special Items – Losses						
5530 Extraordinary Items – Losses						
Net Change In Fund Balances			\$12,083,474	\$5,000,000		\$4,628,465
Fund Balance						
0001 Fund Balance - Beginning of Fiscal Year			3,556,954			73,270,263
Fund Balance - End Of Year			\$15,640,428	\$5,000,000		\$77,898,728

LEA : 114067002 Reading SD

Printed 2/10/2020 9:12:43 AM

Amounts Expressed in Whole Dollars	Food Service (51)	Child Care Operations (52)	Other Enterprise (58)	TOTAL	Internal Service (60)
Assets And Deferred Outflows Of Resources					
Current Assets					
0100 Cash and Cash Equivalents	3,352,270			3,352,270	
0110 Investments					
0130 Due From Other Funds					
0141 Due From Other Governments					
0142 State Revenue Receivable	7,952			7,952	
0143 Federal Revenue Receivable	185,414			185,414	
0146 Due from Primary Government					
0147 Due from Component Unit					
0150 Other Receivables	19,751			19,751	
0170 Inventories	113,062			113,062	
0180 Prepaid Expenses (Expenditures)					
0190 Other Current Assets					
Total Current Assets	\$3,678,449			\$3,678,449	
Noncurrent Assets					
0211 Land					
0212 Site Improvements (Net)					
0220 Buildings and Building Improvements (Net)					
0230 Machinery, Equipment and Furniture (Net)	1,378,497			1,378,497	
0250 Construction in Progress					
0260 Long Term Prepayments					
0290 Other Noncurrent Assets					
Total Noncurrent Assets	\$1,378,497			\$1,378,497	
0910 Deferred Outflows of Resources	2,252,168			2,252,168	
Total Assets And Deferred Outflows Of Resources	\$7,309,114			\$7,309,114	

Amounts Expressed in Whole Dollars	Food Service (51)	Child Care Operations (52)	Other Enterprise (58)	TOTAL	Internal Service (60)
Liabilities And Deferred Inflows Of Resources And Net Position					
Current Liabilities					
0400 Due to Other Funds	2,246,316			2,246,316	
0411 Due to Other Governments					
0413 Due to Component Unit					
0420 Accounts Payable	327,754			327,754	
0430 Contracts Payable					
0440 Current Portion of Long-Term Debt					
0450 Short-Term Payables					
0461 Accrued Salaries and Benefits					
0462 Payroll Deductions and Withholding					
0480 Unearned Revenues					
0490 Other Current Liabilities					
Total Current Liabilities	\$2,574,070			\$2,574,070	
Noncurrent Liabilities					
0510 Bonds Payable					
0520 Extended-Term Financing Agreements Payable					
0530 Lease-Purchase Obligations					
0540 Accumulated Compensated Absences	50,132			50,132	
0550 Authority Lease Obligations					
0560 Other Post-Employment Benefits (OPEB)	6,055,064			6,055,064	
0570 Net Pension Liability					
0599 Other Noncurrent Liabilities	10,934,000			10,934,000	
Total Noncurrent Liabilities	\$17,039,196			\$17,039,196	
Total Liabilities	\$19,613,266			\$19,613,266	
0950 Deferred Inflows of Resources	1,254,144			1,254,144	
Net Position					
0791 Net Investment in Capital Assets					
0008 Restricted Net Position (0792 – 0798)					
0799 Unrestricted Net Position	(13,558,296)			(13,558,296)	
Total Net Position	(\$13,558,296)			(\$13,558,296)	
Total Liabilities And Deferred Inflows Of Resources And Net Position	\$7,309,114			\$7,309,114	

Amounts Expressed in Whole Dollars	Food Service (51)	Child Care Operations (52)	Other Enterprise (58)	TOTAL	Internal Service (60)
Operating Revenues					
6600 Food Service Revenue	71,269			71,269	
0071 Charges for Services	6,462			6,462	
0072 Other Operating Revenue					
Total Operating Revenues	\$77,731			\$77,731	
Operating Expenses					
100 Personnel Services – Salaries	3,731,552			3,731,552	
200 Personnel Services – Employee Benefits	2,903,416			2,903,416	
300 Purchased Professional and Technical Services					
400 Purchased Property Services	125,807			125,807	
500 Other Purchased Services	173,302			173,302	
600 Supplies	7,109,076			7,109,076	
740 Depreciation	137,051			137,051	
810 Dues and Fees					
890 Miscellaneous Expenditures					
Total Operating Expenses	\$14,180,204			\$14,180,204	
Operating Income (Loss)	(\$14,102,473)			(\$14,102,473)	
Non Operating Revenues (Expenses)					
6500 Earnings on Investments	27,936			27,936	
6920 Contributions and Donations from Private Sources					
6930 Gains or Losses on Sale of Fixed Assets					
6991 Refunds of a Prior Year Expenditure					
7000 Revenue from State Sources	1,417,757			1,417,757	
8000 Revenue from Federal Sources	12,541,313			12,541,313	
9990 Insurance Recoveries					
820 Claims and Judgments Against the LEA					
830 Interest					
TOTAL Non Operating Revenues (Expenses)	\$13,987,006			\$13,987,006	
Income (Loss) Before Contributions And Transfers	(\$115,467)			(\$115,467)	

Amounts Expressed in Whole Dollars	<u>Food Service</u> <u>(51)</u>	<u>Child Care Operations</u> <u>(52)</u>	<u>Other Enterprise</u> <u>(58)</u>	<u>TOTAL</u>	<u>Internal Service</u> <u>(60)</u>
Contributions, Transfers, and Special and Extraordinary Items					
5200 Interfund Transfers – Out	631,228			631,228	
5300 Transfers Out to Component Units/Primary Governments					
5520 Special Items – Losses					
5530 Extraordinary Items – Losses					
9300 Interfund Transfers - IN					
9500 Capital Contributions					
9700 Transfers IN From Component Units/Primary Governments					
9920 Special Items – Gains					
9930 Extraordinary Items – Gains					
Change In Net Position	(\$746,695)			(\$746,695)	
0002 Net Position - Beginning of Fiscal Year	(12,811,601)			(12,811,601)	
0003 Accounting Changes / Residual Equity Transfers					
Net Position - End Of Year	(\$13,558,296)			(\$13,558,296)	

LEA : 114067002 Reading SD

Printed 2/10/2020 9:12:53 AM

Amounts Expressed in Whole Dollars	Food Service (51)	Child Care Operations (52)	Other Enterprise (58)	TOTAL	Internal Service(60)
Cash Flows From Operating Activities					
0011 Cash Receipts From Users	88,190			88,190	
0012 Cash Receipts From Assessments Made to Other Funds					
0013 Cash Receipts From Earnings on Investments					
0014 Cash Receipts From Other Operating Revenue					
0015 Cash Payments To Employees For Services	6,544,643			6,544,643	
0016 Cash Payments For Insurance Claims					
0017 Cash Payments To Suppliers For Goods and Services	9,811,259			9,811,259	
0018 Cash Payments For Other Operating Expenses					
Net Cash Provided By (Used For) Operating Activities	(\$16,267,712)			(\$16,267,712)	
Cash Flows From Non-Capital Financing Activities					
0021 Receipts From Local Sources - 6000					
0022 Receipts From State Sources - 7000	1,482,103			1,482,103	
0023 Receipts From Federal Sources -8000	14,039,750			14,039,750	
0024 Notes and Loans Received (Repaid)					
0025 Interest Paid on Notes/Loans - 5100-830					
0026 Operating Transfers In (Out)/Residual Equity Trans					
0027 Operating Transfers In (Out) Primary Government / Comp Unit	(631,228)			(631,228)	
0028 Receipts From Refund of Prior Year Expenditures - 6991					
0029 Special and Extraordinary Gains (losses)					
0030 Receipts from Insurance Recoveries -9990					
Net Cash Prov By (Used for) Non-Capital Financing Activities	\$14,890,625			\$14,890,625	
Cash Flows From Capital and Related Financing Activities					
0031 Payments For Fac Acq, Const, and Imp - 4000	(182,565)			(182,565)	
0032 Gain / (Loss) on Sale of Fixed Assets - 6930					
0033 Proceeds From Extended Term Financing - 9200					
0034 Principal Paid on Financing Agreements					
0035 Interest Paid on Financing Agreements - 5100-830					
0036 (Inc) Dec in Contributed Capital					
Net Cash Prov By (Used for) Capital and Related Financing Activities	(\$182,565)			(\$182,565)	
Cash Flows From Investing Activities					
0041 Earnings on Investments - 6500	27,936			27,936	
0042 Purchase of Inv Securities / Deposits to Inv Pools					
0043 Receipts From Investment Pool Withdrawals					
0044 Proceeds from Sale and Maturity of Inv Securities					

LEA : 114067002 Reading SD

Printed 2/10/2020 9:12:53 AM

0045 Loans Received (Paid)			
Net Cash Prov By (Used for) Investing Activities	\$27,936		\$27,936

LEA : 114067002 Reading SD

Printed 2/10/2020 9:12:53 AM

	Food Service (51)	Child Care Operations (52)	Other Enterprise (58)	TOTAL	Internal Service (60)
Net Increase (Decrease) in Cash Flows	(1,531,716)			(1,531,716)	
0004 Cash and Cash Equivalents Beginning of Year	4,883,986			4,883,986	
Cash and Cash Equivalents at Year End	\$3,352,270			\$3,352,270	
Reconciliation of Operating Income (Loss) To Net Cash Provided by (Used For) Operating Activities					
0005 Operating Income (Loss) per REP	(14,102,473)			(14,102,473)	
Adjustments					
0051 Depreciation and Net Amortization	137,051			137,051	
0052 Provision for Uncollectible Accounts					
0053 Other Adjustments					
Effect of Changes in Assets, Liabilities, Deferred Outflows and Deferred Inflows					
0054 (Inc) Dec In Accounts Receivable (0120-0150)	10,459			10,459	
0055 Advances to Other Funds (0160)					
0056 (Inc) Dec in Inventories (0170)	104,664			104,664	
0057 (Inc) Dec in Prepaid Expenses (0180)					
0058 (Inc) Dec in Other Current or Noncurrent Assets					
0064 Deferred Outflows (0910)					
0059 Inc (Dec) in Accounts Payable (0400-0450)	83,077			83,077	
0060 Inc (Dec) in Accrued Salaries/Benefits (0461)					
0065 Inc (Dec) in Net Pension Liabilities (0570)	104,000			104,000	
0066 Inc (Dec) in Other Postemp Benefit Oblig (0560)	(13,675)			(13,675)	
0061 Inc (Dec) in Payroll Deductions/Withholding (0462)					
0062 Inc (Dec) in Unearned Revenue (0480)					
0063 Inc (Dec) in Other Current or Noncurrent Liabilities	(2,590,815)			(2,590,815)	
0067 Deferred Inflows (0950)					
Total Adjustments	(\$2,165,239)			(\$2,165,239)	
Cash Provided By (Used for) Total	(\$16,267,712)			(\$16,267,712)	

COMBINED STATEMENT OF CASH FLOWS
SCHEDULE OF NONCASH INVESTING, CAPITAL, AND FINANCING ACTIVITIES

Explanation of Transaction and Balance Sheet Effect	Amount
Total	

LEA : 114067002 Reading SD

General Fund (10)

Printed 2/10/2020 9:12:55 AM

Page - 1 of 4

	Revenue Reported In Current Year	Current Year Tax Accrual	Prior Year Tax Accrual	Taxes Collected In Current Year
Revenue from Local Sources				
6111 Current Real Estate Taxes	19,123,457.72			19,123,457.72
6112 Interim Real Estate Taxes	4,304.37			4,304.37
6113 Public Utility Realty Taxes	39,633.40			39,633.40
6114 Payments in Lieu of Current Taxes - State / Local	127,444.68			127,444.68
6120 Current Per Capita Taxes, Section 679	142,589.49			142,589.49
6131 Current Act 1 Earned Income Taxes	11,314,720.47			11,314,720.47
6143 Current Act 511 Local Services Taxes	125,266.80			125,266.80
6145 Current Act 511 Business Privilege Taxes - Flat Rate	1,138,367.08			1,138,367.08
6151 Current Act 511 Earned Income Taxes	5,657,360.21			5,657,360.21
6153 Current Act 511 Real Estate Transfer Taxes	697,539.62			697,539.62
6411 Delinquent Real Estate Taxes	3,175,606.88			3,175,606.88
6420 Delinquent Per Capita Taxes, Section 679	42,670.60			42,670.60
6440 Delinquent Local Enabling Taxes - Flat Rate Assessments	105,842.54			105,842.54
6500 Earnings on Investments	1,597,961.93			
6700 Revenues from LEA Activities	117,952.62			
6829 State Revenue Received from Other Sources	83,146.03			
6832 Federal IDEA Revenue Received as Pass Through	3,090,325.30			
6910 Rentals	120,960.05			
6920 Contributions and Donations from Private Sources	167,751.36			
6942 Summer School Tuition	22,658.00			
6991 Refunds of a Prior Year Expenditure	769,508.86			
6992 Energy Efficiency Revenues and Incentives	7,639.43			
6999 Other Revenues Not Specified Above	299,468.37			
TOTAL Revenue from Local Sources	\$47,972,175.81			\$41,694,803.86

	Revenue Reported In Current Year			
Revenue from State Sources				
7110 Basic Education Funding	139,674,924.77			
7160 Tuition for Orphans Subsidy	184,560.60			
7271 Special Education funds for School-Aged Pupils	11,888,223.04			
7299 Program Revenues Not Listed Previously in the 7200 Series	735,858.04			
7311 Pupil Transportation Subsidy	1,125,551.96			
7312 Nonpublic and Charter School Pupil Transportation Subsidy	302,610.00			
7320 Rental and Sinking Fund Payments / Building Reimbursement Subsidy	6,652,498.36			
7330 Health Services (Medical, Dental, Nurse, Act 25)	403,651.56			
7340 State Property Tax Reduction Allocation	3,680,241.39			
7361 School Safety and Security Grants	25,000.00			
7505 Ready to Learn Block Grant	4,785,693.00			
7810 State Share of Social Security and Medicare Taxes	5,406,663.00			
7820 State Share of Retirement Contributions	27,316,906.12			
TOTAL Revenue from State Sources	\$202,182,381.84			

	Revenue Reported In Current Year			
<u>Revenue from Federal Sources</u>				
8310 Payments for Federally Impacted Areas - P.L. 81-815	14,347.56			
8390 Other Restricted Federal Grants-in-Aid Directly from the Federal Government	147,346.30			
8514 NCLB, Title I - Improving the Academic Achievement of the Disadvantaged	15,971,938.03			
8515 NCLB, Title II - Preparing, Training and Recruiting High Quality Teachers and Principals	1,396,508.80			
8516 NCLB, Title III - Language Instruction for Limited English Proficient and Immigrant Students	857,754.72			
8517 NCLB, Title IV - 21St Century Schools	926,958.13			
8810 School-Based Access Medicaid Reimbursement Program (SBAP) Reimbursements (Access)	1,925,682.32			
8820 Medical Assistance Reimbursement for Administrative Claiming (Quarterly) Program	160,398.30			
TOTAL Revenue from Federal Sources	\$21,400,934.16			

					Revenue Reported In Current Year				
<u>Other Financing Sources</u>									
9350	Enterprise Fund Transfers				631,227.86				
9400	Sale of or Compensation for Loss of Fixed Assets				5,037.36				
9990	Insurance Recoveries				11,271.00				
TOTAL Other Financing Sources					\$647,536.22				
TOTAL FROM ALL SOURCES					\$272,203,028.03	\$41,694,803.86			

Revenue from Local Sources	47,972,175.81
Revenue from State Sources	202,182,381.84
Revenue from Federal Sources	21,400,934.16
Other Financing Sources	647,536.22
TOTAL FROM ALL SOURCES	\$272,203,028.03

LEA : 114067002 Reading SD

Printed 2/10/2020 9:13:01 AM

General Fund (10)	
1000 Instruction	<u>Total</u>
100 <u>Personnel Services – Salaries</u>	
100 Personnel Services – Salaries	68,338,742.77
Total Personnel Services – Salaries	\$68,338,742.77
200 <u>Personnel Services – Employee Benefits</u>	
210 Group Insurance – Contracted Provider	13,774,118.48
220 Social Security Contributions	5,148,984.36
230 PSERS Retirement Contributions	22,806,365.08
250 Unemployment Compensation	64,275.81
260 Workers' Compensation	788,949.87
299 All Other Employee Benefits	(160,969.18)
Total Personnel Services – Employee Benefits	\$42,421,724.42
300 <u>Purchased Professional and Technical Services</u>	
322 Professional Educational Services – Ius	8,540,053.41
329 Professional Educational Services – Other	3,275,329.56
330 Other Professional Services	2,397,961.15
390 Other Purchased Professional and Technical Services	35,585.08
Total Purchased Professional and Technical Services	\$14,248,929.20
400 <u>Purchased Property Services</u>	
430 Repairs and Maintenance Services	35,770.87
Total Purchased Property Services	\$35,770.87
500 <u>Other Purchased Services</u>	
510 Student Transportation Services	393,843.25
550 Printing and Binding	8,802.23
561 Tuition To Other School Districts Within the State	1,975,085.86
562 Tuition To Pennsylvania Charter Schools	11,233,839.36
563 Tuition To Nonpublic Schools	8,524,392.37
564 Tuition To Career and Technology Centers	5,247,073.96
566 Tuition To Institutions of Higher Education and Technical Institutes	48,072.40
567 Tuition To Approved Private Schools (APS) and PA Chartered Schools for the Deaf and Blind	211,559.80
568 Tuition To Private Residential Rehabilitative Institutions (PRRI) [In-State] and Detention Centers	823,243.18
580 Travel	226,658.67
591 Services Purchased Locally	262.10
594 IU Payment By Withholding for Institutionalized Children's Programs – Special Classes	1,199.42
595 IU Payments By Withholding	42,566.67
599 Other Miscellaneous Purchased Services	26,153.89
Total Other Purchased Services	\$28,762,753.16
600 <u>Supplies</u>	
610 General Supplies	2,722,729.21
630 Food	59,109.99
640 Books and Periodicals	765,900.82
650 Supplies & Fees – Technology Related	1,637,211.62
Total Supplies	\$5,184,951.64

LEA : 114067002 Reading SD

Printed 2/10/2020 9:13:01 AM

General Fund (10)		
1000 Instruction		<u>Total</u>
700 <u>Property</u>		
752 Capital Equipment – Original and Additional		122,171.09
762 Capitalized Equipment - Replacement		17,648.99
Total Property		\$139,820.08
800 <u>Other Objects</u>		
810 Dues and Fees		42,227.46
890 Miscellaneous Expenditures		12,887.00
Total Other Objects		\$55,114.46
Total 1000 Instruction		\$159,187,806.60

LEA : 114067002 Reading SD

Printed 2/10/2020 9:13:01 AM

General Fund (10)

1100 Regular Programs – Elementary / Secondary

	Elementary	Secondary	Federal	Total
100 <u>Personnel Services – Salaries</u>				
100 Personnel Services – Salaries	23,314,200.65	22,270,503.51	7,223,544.41	52,808,248.57
Total Personnel Services – Salaries	\$23,314,200.65	\$22,270,503.51	\$7,223,544.41	\$52,808,248.57
200 <u>Personnel Services – Employee Benefits</u>				
210 Group Insurance – Contracted Provider	3,761,908.32	3,472,512.91	2,237,715.82	9,472,137.05
220 Social Security Contributions	1,771,482.99	1,681,999.54	538,781.72	3,992,264.25
230 PSERS Retirement Contributions	7,841,066.45	7,400,755.48	2,400,631.03	17,642,452.96
250 Unemployment Compensation	6,390.87	39,260.69		45,651.56
260 Workers' Compensation	274,082.93	260,560.68	79,435.92	614,079.53
299 All Other Employee Benefits	(102,267.53)	(58,701.65)		(160,969.18)
Total Personnel Services – Employee Benefits	\$13,552,664.03	\$12,796,387.65	\$5,256,564.49	\$31,605,616.17
300 <u>Purchased Professional and Technical Services</u>				
322 Professional Educational Services – Ius		29,149.89		29,149.89
329 Professional Educational Services – Other	1,347,243.90	1,003,845.70	168,758.26	2,519,847.86
330 Other Professional Services		500.00		500.00
390 Other Purchased Professional and Technical Services	4,659.79	303.33		4,963.12
Total Purchased Professional and Technical Services	\$1,351,903.69	\$1,033,798.92	\$168,758.26	\$2,554,460.87
400 <u>Purchased Property Services</u>				
430 Repairs and Maintenance Services	16,612.97	19,157.90		35,770.87
Total Purchased Property Services	\$16,612.97	\$19,157.90		\$35,770.87
500 <u>Other Purchased Services</u>				
510 Student Transportation Services	17,394.80	75,628.86	53,975.39	146,999.05
550 Printing and Binding	2,335.61	6,466.62		8,802.23
561 Tuition To Other School Districts Within the State	16,619.34	446,439.29		463,058.63
562 Tuition To Pennsylvania Charter Schools	831,559.98	5,079,166.80		5,910,726.78
566 Tuition To Institutions of Higher Education and Technical Institutes			48,072.40	48,072.40
568 Tuition To Private Residential Rehabilitative Institutions (PRRI) [In-State] and Detention Centers	375,102.93	393,640.82		768,743.75
580 Travel	2,670.13	9,397.02	1,415.00	13,482.15
591 Services Purchased Locally			262.10	262.10
595 IU Payments By Withholding	21,283.34	21,283.33		42,566.67
599 Other Miscellaneous Purchased Services		26,153.89		26,153.89
Total Other Purchased Services	\$1,266,966.13	\$6,058,176.63	\$103,724.89	\$7,428,867.65
600 <u>Supplies</u>				
610 General Supplies	344,541.95	612,908.25	1,586,887.66	2,544,337.86
630 Food	1,315.57	69.48	9,258.81	10,643.86
640 Books and Periodicals	20,409.72	62,871.34	682,067.76	765,348.82
650 Supplies & Fees – Technology Related	192,800.27	582,255.35	862,156.00	1,637,211.62
Total Supplies	\$559,067.51	\$1,258,104.42	\$3,140,370.23	\$4,957,542.16
700 <u>Property</u>				
752 Capital Equipment – Original and Additional		114,876.14	7,294.95	122,171.09
762 Capitalized Equipment - Replacement		17,648.99		17,648.99
Total Property		\$132,525.13	\$7,294.95	\$139,820.08

General Fund (10)

1100 Regular Programs – Elementary / Secondary	<u>Elementary</u>	<u>Secondary</u>	<u>Federal</u>	<u>Total</u>
800 <u>Other Objects</u>				
810 Dues and Fees	600.00	948.00		1,548.00
890 Miscellaneous Expenditures	76.00		12,811.00	12,887.00
Total Other Objects	\$676.00	\$948.00	\$12,811.00	\$14,435.00
Total 1100 Regular Programs – Elementary / Secondary	\$40,062,090.98	\$43,569,602.16	\$15,913,068.23	\$99,544,761.37

LEA : 114067002 Reading SD

Printed 2/10/2020 9:13:01 AM

General Fund (10)

1110 Regular Programs

	Elementary	Secondary	Federal	Total
100 <u>Personnel Services – Salaries</u>				
100 Personnel Services – Salaries	23,314,200.65	22,270,503.51		45,584,704.16
Total Personnel Services – Salaries	\$23,314,200.65	\$22,270,503.51		\$45,584,704.16
200 <u>Personnel Services – Employee Benefits</u>				
210 Group Insurance – Contracted Provider	3,761,908.32	3,472,512.91		7,234,421.23
220 Social Security Contributions	1,771,482.99	1,681,999.54		3,453,482.53
230 PSERS Retirement Contributions	7,841,066.45	7,400,755.48		15,241,821.93
250 Unemployment Compensation	6,390.87	39,260.69		45,651.56
260 Workers' Compensation	274,082.93	260,560.68		534,643.61
299 All Other Employee Benefits	(102,267.53)	(58,701.65)		(160,969.18)
Total Personnel Services – Employee Benefits	\$13,552,664.03	\$12,796,387.65		\$26,349,051.68
300 <u>Purchased Professional and Technical Services</u>				
322 Professional Educational Services – Ius		29,149.89		29,149.89
329 Professional Educational Services – Other	1,347,243.90	1,003,845.70		2,351,089.60
330 Other Professional Services		500.00		500.00
390 Other Purchased Professional and Technical Services	4,659.79	303.33		4,963.12
Total Purchased Professional and Technical Services	\$1,351,903.69	\$1,033,798.92		\$2,385,702.61
400 <u>Purchased Property Services</u>				
430 Repairs and Maintenance Services	16,612.97	19,157.90		35,770.87
Total Purchased Property Services	\$16,612.97	\$19,157.90		\$35,770.87
500 <u>Other Purchased Services</u>				
510 Student Transportation Services	17,394.80	75,628.86		93,023.66
550 Printing and Binding	2,335.61	6,466.62		8,802.23
561 Tuition To Other School Districts Within the State	16,619.34	446,439.29		463,058.63
562 Tuition To Pennsylvania Charter Schools	831,559.98	5,079,166.80		5,910,726.78
568 Tuition To Private Residential Rehabilitative Institutions (PRRI) [In-State] and Detention Centers	375,102.93	393,640.82		768,743.75
580 Travel	2,670.13	9,397.02		12,067.15
595 IU Payments By Withholding	21,283.34	21,283.33		42,566.67
599 Other Miscellaneous Purchased Services		26,153.89		26,153.89
Total Other Purchased Services	\$1,266,966.13	\$6,058,176.63		\$7,325,142.76
600 <u>Supplies</u>				
610 General Supplies	344,541.95	612,908.25		957,450.20
630 Food	1,315.57	69.48		1,385.05
640 Books and Periodicals	20,409.72	62,871.34		83,281.06
650 Supplies & Fees – Technology Related	192,800.27	582,255.35		775,055.62
Total Supplies	\$559,067.51	\$1,258,104.42		\$1,817,171.93
700 <u>Property</u>				
752 Capital Equipment – Original and Additional		114,876.14		114,876.14
762 Capitalized Equipment - Replacement		17,648.99		17,648.99
Total Property		\$132,525.13		\$132,525.13
800 <u>Other Objects</u>				

LEA : 114067002 Reading SD

Printed 2/10/2020 9:13:01 AM

General Fund (10)				
1110 Regular Programs	<u>Elementary</u>	<u>Secondary</u>	<u>Federal</u>	<u>Total</u>
800 <u>Other Objects</u>				
810 Dues and Fees	600.00	948.00		1,548.00
890 Miscellaneous Expenditures	76.00			76.00
Total Other Objects	\$676.00	\$948.00		\$1,624.00
Total 1110 Regular Programs	\$40,062,090.98	\$43,569,602.16		\$83,631,693.14

LEA : 114067002 Reading SD

Printed 2/10/2020 9:13:01 AM

General Fund (10)					
1190 Federally-Funded Regular Programs		Elementary	Secondary	Federal	Total
100 <u>Personnel Services – Salaries</u>					
100 Personnel Services – Salaries				7,223,544.41	7,223,544.41
Total Personnel Services – Salaries				\$7,223,544.41	\$7,223,544.41
200 <u>Personnel Services – Employee Benefits</u>					
210 Group Insurance – Contracted Provider				2,237,715.82	2,237,715.82
220 Social Security Contributions				538,781.72	538,781.72
230 PSERS Retirement Contributions				2,400,631.03	2,400,631.03
260 Workers' Compensation				79,435.92	79,435.92
Total Personnel Services – Employee Benefits				\$5,256,564.49	\$5,256,564.49
300 <u>Purchased Professional and Technical Services</u>					
329 Professional Educational Services – Other				168,758.26	168,758.26
Total Purchased Professional and Technical Services				\$168,758.26	\$168,758.26
500 <u>Other Purchased Services</u>					
510 Student Transportation Services				53,975.39	53,975.39
566 Tuition To Institutions of Higher Education and Technical Institutes				48,072.40	48,072.40
580 Travel				1,415.00	1,415.00
591 Services Purchased Locally				262.10	262.10
Total Other Purchased Services				\$103,724.89	\$103,724.89
600 <u>Supplies</u>					
610 General Supplies				1,586,887.66	1,586,887.66
630 Food				9,258.81	9,258.81
640 Books and Periodicals				682,067.76	682,067.76
650 Supplies & Fees – Technology Related				862,156.00	862,156.00
Total Supplies				\$3,140,370.23	\$3,140,370.23
700 <u>Property</u>					
752 Capital Equipment – Original and Additional				7,294.95	7,294.95
Total Property				\$7,294.95	\$7,294.95
800 <u>Other Objects</u>					
890 Miscellaneous Expenditures				12,811.00	12,811.00
Total Other Objects				\$12,811.00	\$12,811.00
Total 1190 Federally-Funded Regular Programs				\$15,913,068.23	\$15,913,068.23

LEA : 114067002 Reading SD

Printed 2/10/2020 9:13:01 AM

General Fund (10)				
1200 Special Programs – Elementary / Secondary	<u>Elementary</u>	<u>Secondary</u>	<u>Federal</u>	<u>Total</u>
100 <u>Personnel Services – Salaries</u>				
100 Personnel Services – Salaries	6,460,645.01	5,905,862.05	1,890,641.57	14,257,148.63
Total Personnel Services – Salaries	\$6,460,645.01	\$5,905,862.05	\$1,890,641.57	\$14,257,148.63
200 <u>Personnel Services – Employee Benefits</u>				
210 Group Insurance – Contracted Provider	1,399,960.47	1,348,286.20	1,151,106.95	3,899,353.62
220 Social Security Contributions	481,829.02	439,324.44	140,426.00	1,061,579.46
230 PSERS Retirement Contributions	2,315,912.64	2,110,059.15	314,094.65	4,740,066.44
250 Unemployment Compensation	226.33	15,805.92	2,592.00	18,624.25
260 Workers' Compensation	73,101.89	66,963.77	20,797.05	160,862.71
Total Personnel Services – Employee Benefits	\$4,271,030.35	\$3,980,439.48	\$1,629,016.65	\$9,880,486.48
300 <u>Purchased Professional and Technical Services</u>				
322 Professional Educational Services – lus	1,904,014.46	3,363,185.61		5,267,200.07
329 Professional Educational Services – Other	548,457.91	182,172.61	1,310.70	731,941.22
330 Other Professional Services	748,417.71	1,649,043.44		2,397,461.15
Total Purchased Professional and Technical Services	\$3,200,890.08	\$5,194,401.66	\$1,310.70	\$8,396,602.44
500 <u>Other Purchased Services</u>				
510 Student Transportation Services	123,422.10	123,422.10		246,844.20
561 Tuition To Other School Districts Within the State	184,155.00	1,138,384.47		1,322,539.47
562 Tuition To Pennsylvania Charter Schools	789,794.04	4,533,318.54		5,323,112.58
563 Tuition To Nonpublic Schools	4,901,688.04	3,229,612.79	376,115.14	8,507,415.97
567 Tuition To Approved Private Schools (APS) and PA Chartered Schools for the Deaf and Blind	93,563.00	117,996.80		211,559.80
568 Tuition To Private Residential Rehabilitative Institutions (PRRI) [In-State] and Detention Centers	21,773.99	32,725.44		54,499.43
580 Travel	210,329.11	2,847.41		213,176.52
594 IU Payment By Withholding for Institutionalized Children's Programs – Special Classes	1,199.42			1,199.42
Total Other Purchased Services	\$6,325,924.70	\$9,178,307.55	\$376,115.14	\$15,880,347.39
600 <u>Supplies</u>				
610 General Supplies	56,771.65	97,344.19	16,490.51	170,606.35
630 Food	25,219.56	23,246.57		48,466.13
Total Supplies	\$81,991.21	\$120,590.76	\$16,490.51	\$219,072.48
Total 1200 Special Programs – Elementary / Secondary	\$20,340,481.35	\$24,379,601.50	\$3,913,574.57	\$48,633,657.42

LEA : 114067002 Reading SD

Printed 2/10/2020 9:13:01 AM

General Fund (10)				
1210 Life Skills Support	<u>Elementary</u>	<u>Secondary</u>	<u>Federal</u>	<u>Total</u>
100 <u>Personnel Services – Salaries</u>				
100 Personnel Services – Salaries	370,829.63	864,968.41	272,887.73	1,508,685.77
Total Personnel Services – Salaries	\$370,829.63	\$864,968.41	\$272,887.73	\$1,508,685.77
200 <u>Personnel Services – Employee Benefits</u>				
210 Group Insurance – Contracted Provider	144,154.60	294,072.96	160,113.52	598,341.08
220 Social Security Contributions	27,423.98	64,269.96	20,311.30	112,005.24
230 PSERS Retirement Contributions	156,996.58	300,908.51	45,462.75	503,367.84
250 Unemployment Compensation	216.00	6,314.88	2,592.00	9,122.88
260 Workers' Compensation	4,079.27	9,515.63	3,002.18	16,597.08
Total Personnel Services – Employee Benefits	\$332,870.43	\$675,081.94	\$231,481.75	\$1,239,434.12
300 <u>Purchased Professional and Technical Services</u>				
322 Professional Educational Services – lus	111,478.91	144,720.24		256,199.15
329 Professional Educational Services – Other	134,978.85	63,443.60		198,422.45
330 Other Professional Services	4,479.16	75,234.89		79,714.05
Total Purchased Professional and Technical Services	\$250,936.92	\$283,398.73		\$534,335.65
500 <u>Other Purchased Services</u>				
561 Tuition To Other School Districts Within the State		21,914.62		21,914.62
563 Tuition To Nonpublic Schools	14,102.20	107,762.74		121,864.94
Total Other Purchased Services	\$14,102.20	\$129,677.36		\$143,779.56
600 <u>Supplies</u>				
610 General Supplies	2,911.03	70,218.17	5,232.00	78,361.20
Total Supplies	\$2,911.03	\$70,218.17	\$5,232.00	\$78,361.20
Total 1210 Life Skills Support	\$971,650.21	\$2,023,344.61	\$509,601.48	\$3,504,596.30

LEA : 114067002 Reading SD

Printed 2/10/2020 9:13:01 AM

General Fund (10)				
1220 Sensory Support	<u>Elementary</u>	<u>Secondary</u>	<u>Federal</u>	<u>Total</u>
100 <u>Personnel Services – Salaries</u>				
100 Personnel Services – Salaries	453,445.58	203,344.30	82,885.48	739,675.36
Total Personnel Services – Salaries	\$453,445.58	\$203,344.30	\$82,885.48	\$739,675.36
200 <u>Personnel Services – Employee Benefits</u>				
210 Group Insurance – Contracted Provider	115,677.56	56,034.00	65,400.64	237,112.20
220 Social Security Contributions	34,051.90	15,060.77	6,151.19	55,263.86
230 PSERS Retirement Contributions	152,492.00	77,079.70	13,804.14	243,375.84
260 Workers' Compensation	5,003.52	2,219.96	912.04	8,135.52
Total Personnel Services – Employee Benefits	\$307,224.98	\$150,394.43	\$86,268.01	\$543,887.42
300 <u>Purchased Professional and Technical Services</u>				
322 Professional Educational Services – Ius	347,164.84	1,044,491.15		1,391,655.99
329 Professional Educational Services – Other	18,267.54	154.80		18,422.34
330 Other Professional Services	358,230.50	444,510.52		802,741.02
Total Purchased Professional and Technical Services	\$723,662.88	\$1,489,156.47		\$2,212,819.35
500 <u>Other Purchased Services</u>				
580 Travel	57.71	57.71		115.42
Total Other Purchased Services	\$57.71	\$57.71		\$115.42
600 <u>Supplies</u>				
610 General Supplies	8,037.14	1,965.23	770.89	10,773.26
Total Supplies	\$8,037.14	\$1,965.23	\$770.89	\$10,773.26
Total 1220 Sensory Support	\$1,492,428.29	\$1,844,918.14	\$169,924.38	\$3,507,270.81

LEA : 114067002 Reading SD

Printed 2/10/2020 9:13:01 AM

General Fund (10)				
1230 Emotional Support	<u>Elementary</u>	<u>Secondary</u>	<u>Federal</u>	<u>Total</u>
100 <u>Personnel Services – Salaries</u>				
100 Personnel Services – Salaries	1,549,765.45	805,076.28	649,298.67	3,004,140.40
Total Personnel Services – Salaries	\$1,549,765.45	\$805,076.28	\$649,298.67	\$3,004,140.40
200 <u>Personnel Services – Employee Benefits</u>				
210 Group Insurance – Contracted Provider	457,933.41	256,828.16	426,076.38	1,140,837.95
220 Social Security Contributions	116,058.75	60,004.29	48,125.99	224,189.03
230 PSERS Retirement Contributions	577,299.04	316,444.42	108,228.94	1,001,972.40
260 Workers' Compensation	17,050.31	8,854.98	7,143.46	33,048.75
Total Personnel Services – Employee Benefits	\$1,168,341.51	\$642,131.85	\$589,574.77	\$2,400,048.13
300 <u>Purchased Professional and Technical Services</u>				
322 Professional Educational Services – Ius	494,879.11	1,300,520.52		1,795,399.63
329 Professional Educational Services – Other	157,225.35	50,429.80		207,655.15
330 Other Professional Services	102,446.99	357,658.24		460,105.23
Total Purchased Professional and Technical Services	\$754,551.45	\$1,708,608.56		\$2,463,160.01
500 <u>Other Purchased Services</u>				
561 Tuition To Other School Districts Within the State	89,550.94	793,411.73		882,962.67
563 Tuition To Nonpublic Schools	4,834,208.49	3,018,677.89	376,115.14	8,229,001.52
580 Travel	209,372.32	1,228.92		210,601.24
Total Other Purchased Services	\$5,133,131.75	\$3,813,318.54	\$376,115.14	\$9,322,565.43
600 <u>Supplies</u>				
610 General Supplies	19,462.68	3,241.04	407.48	23,111.20
630 Food	1,973.00			1,973.00
Total Supplies	\$21,435.68	\$3,241.04	\$407.48	\$25,084.20
Total 1230 Emotional Support	\$8,627,225.84	\$6,972,376.27	\$1,615,396.06	\$17,214,998.17

LEA : 114067002 Reading SD

Printed 2/10/2020 9:13:01 AM

General Fund (10)				
1240 Academic Support	<u>Elementary</u>	<u>Secondary</u>	<u>Federal</u>	<u>Total</u>
100 <u>Personnel Services – Salaries</u>				
100 Personnel Services – Salaries	3,893,076.43	3,575,573.22	748,103.43	8,216,753.08
Total Personnel Services – Salaries	\$3,893,076.43	\$3,575,573.22	\$748,103.43	\$8,216,753.08
200 <u>Personnel Services – Employee Benefits</u>				
210 Group Insurance – Contracted Provider	578,021.98	592,477.84	424,101.20	1,594,601.02
220 Social Security Contributions	289,928.83	265,857.89	55,603.81	611,390.53
230 PSERS Retirement Contributions	1,356,319.02	1,248,617.21	123,637.89	2,728,574.12
250 Unemployment Compensation		2,616.70		2,616.70
260 Workers' Compensation	44,839.73	41,347.05	8,226.81	94,413.59
Total Personnel Services – Employee Benefits	\$2,269,109.56	\$2,150,916.69	\$611,569.71	\$5,031,595.96
300 <u>Purchased Professional and Technical Services</u>				
322 Professional Educational Services – lus	48,668.03	212,517.97		261,186.00
329 Professional Educational Services – Other	189,378.72	42,695.78	1,310.70	233,385.20
330 Other Professional Services	32,709.05	29,557.35		62,266.40
Total Purchased Professional and Technical Services	\$270,755.80	\$284,771.10	\$1,310.70	\$556,837.60
500 <u>Other Purchased Services</u>				
510 Student Transportation Services	123,422.10	123,422.10		246,844.20
561 Tuition To Other School Districts Within the State	47,384.06	323,058.12		370,442.18
563 Tuition To Nonpublic Schools	51,477.35	102,222.16		153,699.51
Total Other Purchased Services	\$222,283.51	\$548,702.38		\$770,985.89
600 <u>Supplies</u>				
610 General Supplies	4,884.56	1,653.25		6,537.81
Total Supplies	\$4,884.56	\$1,653.25		\$6,537.81
Total 1240 Academic Support	\$6,660,109.86	\$6,561,616.64	\$1,360,983.84	\$14,582,710.34

LEA : 114067002 Reading SD

Printed 2/10/2020 9:13:01 AM

General Fund (10)

1241 Learning Support – Public	Elementary	Secondary	Federal	Total
100 <u>Personnel Services – Salaries</u>				
100 Personnel Services – Salaries	3,782,129.98	3,363,997.03	748,103.43	7,894,230.44
Total Personnel Services – Salaries	\$3,782,129.98	\$3,363,997.03	\$748,103.43	\$7,894,230.44
200 <u>Personnel Services – Employee Benefits</u>				
210 Group Insurance – Contracted Provider	559,383.98	533,155.08	424,101.20	1,516,640.26
220 Social Security Contributions	281,608.43	250,146.61	55,603.81	587,358.85
230 PSERS Retirement Contributions	1,322,316.20	1,177,966.71	123,637.89	2,623,920.80
250 Unemployment Compensation		2,616.70		2,616.70
260 Workers' Compensation	43,619.49	39,019.48	8,226.81	90,865.78
Total Personnel Services – Employee Benefits	\$2,206,928.10	\$2,002,904.58	\$611,569.71	\$4,821,402.39
300 <u>Purchased Professional and Technical Services</u>				
322 Professional Educational Services – lus	48,668.03	212,517.97		261,186.00
329 Professional Educational Services – Other	174,077.95	40,990.13	1,310.70	216,378.78
330 Other Professional Services	32,709.05	29,557.35		62,266.40
Total Purchased Professional and Technical Services	\$255,455.03	\$283,065.45	\$1,310.70	\$539,831.18
500 <u>Other Purchased Services</u>				
510 Student Transportation Services	123,422.10	123,422.10		246,844.20
561 Tuition To Other School Districts Within the State	47,384.06	300,235.79		347,619.85
563 Tuition To Nonpublic Schools	51,477.35	102,159.16		153,636.51
Total Other Purchased Services	\$222,283.51	\$525,817.05		\$748,100.56
600 <u>Supplies</u>				
610 General Supplies	4,884.56	1,653.25		6,537.81
Total Supplies	\$4,884.56	\$1,653.25		\$6,537.81
Total 1241 Learning Support – Public	\$6,471,681.18	\$6,177,437.36	\$1,360,983.84	\$14,010,102.38

LEA : 114067002 Reading SD

Printed 2/10/2020 9:13:01 AM

General Fund (10)				
1243 Gifted Support	<u>Elementary</u>	<u>Secondary</u>	<u>Federal</u>	<u>Total</u>
100 <u>Personnel Services – Salaries</u>				
100 Personnel Services – Salaries	110,946.45	211,576.19		322,522.64
Total Personnel Services – Salaries	\$110,946.45	\$211,576.19		\$322,522.64
200 <u>Personnel Services – Employee Benefits</u>				
210 Group Insurance – Contracted Provider	18,638.00	59,322.76		77,960.76
220 Social Security Contributions	8,320.40	15,711.28		24,031.68
230 PSERS Retirement Contributions	34,002.82	70,650.50		104,653.32
260 Workers' Compensation	1,220.24	2,327.57		3,547.81
Total Personnel Services – Employee Benefits	\$62,181.46	\$148,012.11		\$210,193.57
300 <u>Purchased Professional and Technical Services</u>				
329 Professional Educational Services – Other	15,300.77	1,705.65		17,006.42
Total Purchased Professional and Technical Services	\$15,300.77	\$1,705.65		\$17,006.42
500 <u>Other Purchased Services</u>				
561 Tuition To Other School Districts Within the State		22,822.33		22,822.33
563 Tuition To Nonpublic Schools		63.00		63.00
Total Other Purchased Services		\$22,885.33		\$22,885.33
Total 1243 Gifted Support	\$188,428.68	\$384,179.28		\$572,607.96

LEA : 114067002 Reading SD

Printed 2/10/2020 9:13:01 AM

General Fund (10)				
1270 Multi-Handicapped Support	<u>Elementary</u>	<u>Secondary</u>	<u>Federal</u>	<u>Total</u>
100 <u>Personnel Services – Salaries</u>				
100 Personnel Services – Salaries	171,147.55	182,981.65	137,466.26	491,595.46
Total Personnel Services – Salaries	\$171,147.55	\$182,981.65	\$137,466.26	\$491,595.46
200 <u>Personnel Services – Employee Benefits</u>				
210 Group Insurance – Contracted Provider	89,172.92	84,597.24	75,415.21	249,185.37
220 Social Security Contributions	12,696.13	13,707.69	10,233.71	36,637.53
230 PSERS Retirement Contributions	65,374.42	75,555.59	22,960.93	163,890.94
250 Unemployment Compensation		6,864.00		6,864.00
260 Workers' Compensation	1,882.93	2,012.98	1,512.56	5,408.47
Total Personnel Services – Employee Benefits	\$169,126.40	\$182,737.50	\$110,122.41	\$461,986.31
300 <u>Purchased Professional and Technical Services</u>				
322 Professional Educational Services – lus	168,792.28	54,146.44		222,938.72
329 Professional Educational Services – Other	48,607.45	22,958.88		71,566.33
330 Other Professional Services	40,336.01	89,189.60		129,525.61
Total Purchased Professional and Technical Services	\$257,735.74	\$166,294.92		\$424,030.66
500 <u>Other Purchased Services</u>				
561 Tuition To Other School Districts Within the State	47,220.00			47,220.00
563 Tuition To Nonpublic Schools	1,900.00	950.00		2,850.00
Total Other Purchased Services	\$49,120.00	\$950.00		\$50,070.00
600 <u>Supplies</u>				
610 General Supplies	16,537.46	15,327.72	7,789.32	39,654.50
Total Supplies	\$16,537.46	\$15,327.72	\$7,789.32	\$39,654.50
Total 1270 Multi-Handicapped Support	\$663,667.15	\$548,291.79	\$255,377.99	\$1,467,336.93

LEA : 114067002 Reading SD

Printed 2/10/2020 9:13:01 AM

General Fund (10)

1280 Early Intervention Support

	<u>Elementary</u>	<u>Secondary</u>	<u>Federal</u>	<u>Total</u>
300 <u>Purchased Professional and Technical Services</u>				
322 Professional Educational Services – lus	126,242.00			126,242.00
Total Purchased Professional and Technical Services	\$126,242.00			\$126,242.00
Total 1280 Early Intervention Support	\$126,242.00			\$126,242.00

LEA : 114067002 Reading SD

Printed 2/10/2020 9:13:01 AM

General Fund (10)				
1290 Special Programs - Other Support	<u>Elementary</u>	<u>Secondary</u>	<u>Federal</u>	<u>Total</u>
100 <u>Personnel Services – Salaries</u>				
100 Personnel Services – Salaries	22,380.37	273,918.19		296,298.56
Total Personnel Services – Salaries	\$22,380.37	\$273,918.19		\$296,298.56
200 <u>Personnel Services – Employee Benefits</u>				
210 Group Insurance – Contracted Provider	15,000.00	64,276.00		79,276.00
220 Social Security Contributions	1,669.43	20,423.84		22,093.27
230 PSERS Retirement Contributions	7,431.58	91,453.72		98,885.30
250 Unemployment Compensation	10.33	10.34		20.67
260 Workers' Compensation	246.13	3,013.17		3,259.30
Total Personnel Services – Employee Benefits	\$24,357.47	\$179,177.07		\$203,534.54
300 <u>Purchased Professional and Technical Services</u>				
322 Professional Educational Services – lus	606,789.29	606,789.29		1,213,578.58
329 Professional Educational Services – Other		2,489.75		2,489.75
330 Other Professional Services	210,216.00	652,892.84		863,108.84
Total Purchased Professional and Technical Services	\$817,005.29	\$1,262,171.88		\$2,079,177.17
500 <u>Other Purchased Services</u>				
562 Tuition To Pennsylvania Charter Schools	789,794.04	4,533,318.54		5,323,112.58
567 Tuition To Approved Private Schools (APS) and PA Chartered Schools for the Deaf and Blind	93,563.00	117,996.80		211,559.80
568 Tuition To Private Residential Rehabilitative Institutions (PRRI) [In-State] and Detention Centers	21,773.99	32,725.44		54,499.43
580 Travel	899.08	1,560.78		2,459.86
594 IU Payment By Withholding for Institutionalized Children’s Programs – Special Classes	1,199.42			1,199.42
Total Other Purchased Services	\$907,229.53	\$4,685,601.56		\$5,592,831.09
600 <u>Supplies</u>				
610 General Supplies	4,938.78	4,938.78	2,290.82	12,168.38
630 Food	23,246.56	23,246.57		46,493.13
Total Supplies	\$28,185.34	\$28,185.35	\$2,290.82	\$58,661.51
Total 1290 Special Programs - Other Support	\$1,799,158.00	\$6,429,054.05	\$2,290.82	\$8,230,502.87

LEA : 114067002 Reading SD

Printed 2/10/2020 9:13:01 AM

General Fund (10)				
1300 Vocational Education	<u>Elementary</u>	<u>Secondary</u>	<u>Federal</u>	<u>Total</u>
500 <u>Other Purchased Services</u>				
564 Tuition To Career and Technology Centers		5,247,073.96		5,247,073.96
Total Other Purchased Services		\$5,247,073.96		\$5,247,073.96
Total 1300 Vocational Education		\$5,247,073.96		\$5,247,073.96

LEA : 114067002 Reading SD

Printed 2/10/2020 9:13:01 AM

General Fund (10)				
1400 Other Instructional Programs – Elementary / Secondary	<u>Elementary</u>	<u>Secondary</u>	<u>Federal</u>	<u>Total</u>
100 <u>Personnel Services – Salaries</u>				
100 Personnel Services – Salaries	1,937.25	89,662.60	52,938.85	144,538.70
Total Personnel Services – Salaries	\$1,937.25	\$89,662.60	\$52,938.85	\$144,538.70
200 <u>Personnel Services – Employee Benefits</u>				
220 Social Security Contributions	148.21	6,858.60	4,040.93	11,047.74
230 PSERS Retirement Contributions	647.62	38,647.34	8,804.78	48,099.74
260 Workers’ Compensation	21.30	986.31	582.37	1,589.98
Total Personnel Services – Employee Benefits	\$817.13	\$46,492.25	\$13,428.08	\$60,737.46
300 <u>Purchased Professional and Technical Services</u>				
322 Professional Educational Services – Ius	1,125.00	2,672,880.18		2,674,005.18
329 Professional Educational Services – Other			1,525.00	1,525.00
390 Other Purchased Professional and Technical Services			30,621.96	30,621.96
Total Purchased Professional and Technical Services	\$1,125.00	\$2,672,880.18	\$32,146.96	\$2,706,152.14
500 <u>Other Purchased Services</u>				
561 Tuition To Other School Districts Within the State		189,487.76		189,487.76
563 Tuition To Nonpublic Schools		16,976.40		16,976.40
Total Other Purchased Services		\$206,464.16		\$206,464.16
Total 1400 Other Instructional Programs – Elementary / Secondary	\$3,879.38	\$3,015,499.19	\$98,513.89	\$3,117,892.46

LEA : 114067002 Reading SD

Printed 2/10/2020 9:13:01 AM

General Fund (10)

1420 Summer School

	<u>Elementary</u>	<u>Secondary</u>	<u>Federal</u>	<u>Total</u>
100 <u>Personnel Services – Salaries</u>				
100 Personnel Services – Salaries		41,728.50	12,715.75	54,444.25
Total Personnel Services – Salaries		\$41,728.50	\$12,715.75	\$54,444.25
200 <u>Personnel Services – Employee Benefits</u>				
220 Social Security Contributions		3,192.25	972.78	4,165.03
230 PSERS Retirement Contributions		15,902.83	2,084.53	17,987.36
260 Workers’ Compensation		459.04	139.88	598.92
Total Personnel Services – Employee Benefits		\$19,554.12	\$3,197.19	\$22,751.31
300 <u>Purchased Professional and Technical Services</u>				
390 Other Purchased Professional and Technical Services			4,266.72	4,266.72
Total Purchased Professional and Technical Services			\$4,266.72	\$4,266.72
Total 1420 Summer School		\$61,282.62	\$20,179.66	\$81,462.28

General Fund (10)

1430 Homebound Instruction	<u>Elementary</u>	<u>Secondary</u>	<u>Federal</u>	<u>Total</u>
100 <u>Personnel Services – Salaries</u>				
100 Personnel Services – Salaries	1,937.25	47,934.10		49,871.35
Total Personnel Services – Salaries	\$1,937.25	\$47,934.10		\$49,871.35
200 <u>Personnel Services – Employee Benefits</u>				
220 Social Security Contributions	148.21	3,666.35		3,814.56
230 PSERS Retirement Contributions	647.62	16,024.26		16,671.88
260 Workers’ Compensation	21.30	527.27		548.57
Total Personnel Services – Employee Benefits	\$817.13	\$20,217.88		\$21,035.01
Total 1430 Homebound Instruction	\$2,754.38	\$68,151.98		\$70,906.36

LEA : 114067002 Reading SD

Printed 2/10/2020 9:13:01 AM

General Fund (10)

1440 Alternative Regular Education Programs	<u>Elementary</u>	<u>Secondary</u>	<u>Federal</u>	<u>Total</u>
300 <u>Purchased Professional and Technical Services</u>				
322 Professional Educational Services – lus	1,125.00	2,672,880.18		2,674,005.18
Total Purchased Professional and Technical Services	\$1,125.00	\$2,672,880.18		\$2,674,005.18
500 <u>Other Purchased Services</u>				
561 Tuition To Other School Districts Within the State		189,487.76		189,487.76
563 Tuition To Nonpublic Schools		16,976.40		16,976.40
Total Other Purchased Services		\$206,464.16		\$206,464.16
Total 1440 Alternative Regular Education Programs	\$1,125.00	\$2,879,344.34		\$2,880,469.34

LEA : 114067002 Reading SD

Printed 2/10/2020 9:13:01 AM

General Fund (10)

1441 Adjudicated / Court-Placed Programs	<u>Elementary</u>	<u>Secondary</u>	<u>Federal</u>	<u>Total</u>
300 <u>Purchased Professional and Technical Services</u>				
322 Professional Educational Services – lus	1,125.00	393,419.18		394,544.18
Total Purchased Professional and Technical Services	\$1,125.00	\$393,419.18		\$394,544.18
500 <u>Other Purchased Services</u>				
561 Tuition To Other School Districts Within the State		189,487.76		189,487.76
563 Tuition To Nonpublic Schools		16,976.40		16,976.40
Total Other Purchased Services		\$206,464.16		\$206,464.16
Total 1441 Adjudicated / Court-Placed Programs	\$1,125.00	\$599,883.34		\$601,008.34

LEA : 114067002 Reading SD

Printed 2/10/2020 9:13:01 AM

General Fund (10)

1442 Alternative Education Programs	<u>Elementary</u>	<u>Secondary</u>	<u>Federal</u>	<u>Total</u>
300 <u>Purchased Professional and Technical Services</u>				
322 Professional Educational Services – lus		2,279,461.00		2,279,461.00
Total Purchased Professional and Technical Services		\$2,279,461.00		\$2,279,461.00
Total 1442 Alternative Education Programs		\$2,279,461.00		\$2,279,461.00

LEA : 114067002 Reading SD

Printed 2/10/2020 9:13:01 AM

General Fund (10)				
1490 Additional Other Instructional Programs	<u>Elementary</u>	<u>Secondary</u>	<u>Federal</u>	<u>Total</u>
100 <u>Personnel Services – Salaries</u>				
100 Personnel Services – Salaries			40,223.10	40,223.10
Total Personnel Services – Salaries			\$40,223.10	\$40,223.10
200 <u>Personnel Services – Employee Benefits</u>				
220 Social Security Contributions			3,068.15	3,068.15
230 PSERS Retirement Contributions		6,720.25	6,720.25	13,440.50
260 Workers’ Compensation			442.49	442.49
Total Personnel Services – Employee Benefits		\$6,720.25	\$10,230.89	\$16,951.14
300 <u>Purchased Professional and Technical Services</u>				
329 Professional Educational Services – Other			1,525.00	1,525.00
390 Other Purchased Professional and Technical Services			26,355.24	26,355.24
Total Purchased Professional and Technical Services			\$27,880.24	\$27,880.24
Total 1490 Additional Other Instructional Programs		\$6,720.25	\$78,334.23	\$85,054.48

General Fund (10)

1500 Nonpublic School Programs

	<u>Elementary</u>	<u>Secondary</u>	<u>Federal</u>	<u>Total</u>
300 <u>Purchased Professional and Technical Services</u>				
322 Professional Educational Services – Ius			569,698.27	569,698.27
329 Professional Educational Services – Other			8,172.88	8,172.88
Total Purchased Professional and Technical Services			\$577,871.15	\$577,871.15
800 <u>Other Objects</u>				
810 Dues and Fees			38,544.46	38,544.46
Total Other Objects			\$38,544.46	\$38,544.46
Total 1500 Nonpublic School Programs			\$616,415.61	\$616,415.61

LEA : 114067002 Reading SD

Printed 2/10/2020 9:13:01 AM

General Fund (10)				
1600 Adult Education Programs	<u>Elementary</u>	<u>Secondary</u>	<u>Federal</u>	<u>Total</u>
600 <u>Supplies</u>				
610 General Supplies				7,785.00
640 Books and Periodicals				552.00
Total Supplies				\$8,337.00
800 <u>Other Objects</u>				
810 Dues and Fees				2,135.00
Total Other Objects				\$2,135.00
Total 1600 Adult Education Programs				\$10,472.00

LEA : 114067002 Reading SD

Printed 2/10/2020 9:13:01 AM

General Fund (10)

1800 Pre-Kindergarten

Elementary Secondary Federal Total

100 <u>Personnel Services – Salaries</u>				
100 Personnel Services – Salaries				1,128,806.87
Total Personnel Services – Salaries				\$1,128,806.87
200 <u>Personnel Services – Employee Benefits</u>				
210 Group Insurance – Contracted Provider				402,627.81
220 Social Security Contributions				84,092.91
230 PSERS Retirement Contributions				375,745.94
260 Workers' Compensation				12,417.65
Total Personnel Services – Employee Benefits				\$874,884.31
300 <u>Purchased Professional and Technical Services</u>				
329 Professional Educational Services – Other				13,842.60
Total Purchased Professional and Technical Services				\$13,842.60
Total 1800 Pre-Kindergarten				\$2,017,533.78

LEA : 114067002 Reading SD

Printed 2/10/2020 9:13:01 AM

General Fund (10)

1801 Pre-K Instruction

Elementary Secondary Federal Total

100 <u>Personnel Services – Salaries</u>				
100 Personnel Services – Salaries				1,128,806.87
Total Personnel Services – Salaries				\$1,128,806.87
200 <u>Personnel Services – Employee Benefits</u>				
210 Group Insurance – Contracted Provider				402,627.81
220 Social Security Contributions				84,092.91
230 PSERS Retirement Contributions				375,745.94
260 Workers' Compensation				12,417.65
Total Personnel Services – Employee Benefits				\$874,884.31
300 <u>Purchased Professional and Technical Services</u>				
329 Professional Educational Services – Other				13,842.60
Total Purchased Professional and Technical Services				\$13,842.60
Total 1801 Pre-K Instruction				\$2,017,533.78

LEA : 114067002 Reading SD

Printed 2/10/2020 9:13:07 AM

General Fund (10)

2000 Support Services		Total
100 Personnel Services – Salaries		
100 Personnel Services – Salaries		27,429,687.21
Total Personnel Services – Salaries		\$27,429,687.21
200 Personnel Services – Employee Benefits		
210 Group Insurance – Contracted Provider		6,157,349.99
220 Social Security Contributions		2,059,385.86
230 PSERS Retirement Contributions		9,195,609.47
240 Tuition Reimbursement		302,480.17
250 Unemployment Compensation		36,459.76
260 Workers' Compensation		490,293.99
280 Other Post-Employment Benefits (OPEB)		6,153,644.60
299 All Other Employee Benefits		(16,582.37)
Total Personnel Services – Employee Benefits		\$24,378,641.47
300 Purchased Professional and Technical Services		
310 Official / Administrative Services		62,663.82
322 Professional Educational Services – Ius		421,301.61
323 Professional Educational Services – Other Educational Agencies		3,372.93
329 Professional Educational Services – Other		737,691.03
330 Other Professional Services		3,166,913.49
340 Technical Services		654,758.45
350 Security / Safety Services		100.00
360 Employee Training and Development Services		678,325.50
390 Other Purchased Professional and Technical Services		27,865.59
Total Purchased Professional and Technical Services		\$5,752,992.42
400 Purchased Property Services		
410 Cleaning Services		165,333.72
420 Utility Services		892,196.52
430 Repairs and Maintenance Services		1,210,253.58
440 Rentals		539,301.29
460 Extermination Services		28,169.80
490 Other Purchased Property Services		6,187.17
Total Purchased Property Services		\$2,841,442.08
500 Other Purchased Services		
513 Contracted Carriers		24,336.90
516 Student Transportation Services From the IU		5,370,635.80
520 Insurance – General		751,342.00
521 Fire Insurance		29,454.00
522 Automotive Liability Insurance		64,209.00
529 Other Insurance		2,672.00
530 Communications		328,530.35
549 Other Advertising/Public Relations		7,392.30
550 Printing and Binding		21,493.83
580 Travel		98,544.85
591 Services Purchased Locally		430.00

LEA : 114067002 Reading SD

Printed 2/10/2020 9:13:07 AM

General Fund (10)

2000 Support Services

Total

500	<u>Other Purchased Services</u>	
595	IU Payments By Withholding	42,566.67
599	Other Miscellaneous Purchased Services	9,587.60
Total Other Purchased Services		\$6,751,195.30
600	<u>Supplies</u>	
610	General Supplies	2,282,586.54
620	Energy	2,408,489.49
630	Food	8,107.50
640	Books and Periodicals	37,245.41
650	Supplies & Fees – Technology Related	837,852.88
Total Supplies		\$5,574,281.82
700	<u>Property</u>	
762	Capitalized Equipment - Replacement	1,429,023.82
766	Capitalized Technology Equipment – Replacement	1,398,829.45
Total Property		\$2,827,853.27
800	<u>Other Objects</u>	
810	Dues and Fees	159,102.18
820	Claims and Judgments Against the LEA	121,650.00
890	Miscellaneous Expenditures	27,118.81
Total Other Objects		\$307,870.99
Total 2000 Support Services		\$75,863,964.56

LEA : 114067002 Reading SD

Printed 2/10/2020 9:13:07 AM

General Fund (10)

2100 Support Services – Students	Elementary	Secondary	Federal	Total
100 <u>Personnel Services – Salaries</u>				
100 Personnel Services – Salaries	1,434,635.68	1,937,718.70	1,227,165.08	5,928,826.39
Total Personnel Services – Salaries	\$1,434,635.68	\$1,937,718.70	\$1,227,165.08	\$5,928,826.39
200 <u>Personnel Services – Employee Benefits</u>				
210 Group Insurance – Contracted Provider	364,875.88	489,151.20	279,963.14	1,523,095.34
220 Social Security Contributions	106,447.17	142,716.05	91,090.15	438,861.70
230 PSERS Retirement Contributions	589,141.56	733,118.92	211,119.30	1,976,272.74
250 Unemployment Compensation				(2,663.70)
260 Workers' Compensation	15,780.55	23,136.06	13,499.27	62,144.31
299 All Other Employee Benefits	436.33	436.33		872.66
Total Personnel Services – Employee Benefits	\$1,076,681.49	\$1,388,558.56	\$595,671.86	\$3,998,583.05
300 <u>Purchased Professional and Technical Services</u>				
322 Professional Educational Services – Ius	60,371.74	136,816.55	25,000.00	222,188.29
323 Professional Educational Services – Other Educational Agencies			3,372.93	3,372.93
329 Professional Educational Services – Other	35,801.50	36,496.60	123,978.86	196,622.26
330 Other Professional Services	164,897.26	167,132.02		332,029.28
Total Purchased Professional and Technical Services	\$261,070.50	\$340,445.17	\$152,351.79	\$754,212.76
500 <u>Other Purchased Services</u>				
580 Travel	2,219.84	2,219.85		6,144.96
Total Other Purchased Services	\$2,219.84	\$2,219.85		\$6,144.96
600 <u>Supplies</u>				
610 General Supplies	44,496.81	46,054.51	292.00	90,843.32
Total Supplies	\$44,496.81	\$46,054.51	\$292.00	\$90,843.32
Total 2100 Support Services – Students	\$2,819,104.32	\$3,714,996.79	\$1,975,480.73	\$10,778,610.48

LEA : 114067002 Reading SD

Printed 2/10/2020 9:13:07 AM

General Fund (10)				
2110 Supervision of Student Services	<u>Elementary</u>	<u>Secondary</u>	<u>Federal</u>	<u>Total</u>
100 <u>Personnel Services – Salaries</u>				
100 Personnel Services – Salaries	150,244.44	172,690.91		322,935.35
Total Personnel Services – Salaries	\$150,244.44	\$172,690.91		\$322,935.35
200 <u>Personnel Services – Employee Benefits</u>				
210 Group Insurance – Contracted Provider	48,515.04	57,102.58		105,617.62
220 Social Security Contributions	11,077.00	13,043.12		24,120.12
230 PSERS Retirement Contributions	50,017.96	57,371.12		107,389.08
260 Workers' Compensation	1,652.83	1,899.73		3,552.56
299 All Other Employee Benefits	436.33	436.33		872.66
Total Personnel Services – Employee Benefits	\$111,699.16	\$129,852.88		\$241,552.04
300 <u>Purchased Professional and Technical Services</u>				
329 Professional Educational Services – Other	35,288.50	35,288.50		70,577.00
330 Other Professional Services	126.00	126.00		252.00
Total Purchased Professional and Technical Services	\$35,414.50	\$35,414.50		\$70,829.00
500 <u>Other Purchased Services</u>				
580 Travel	36.14	36.15		72.29
Total Other Purchased Services	\$36.14	\$36.15		\$72.29
Total 2110 Supervision of Student Services	\$297,394.24	\$337,994.44		\$635,388.68

General Fund (10)

2111 Supervision of Student Services – Head of Component	<u>Elementary</u>	<u>Secondary</u>	<u>Federal</u>	<u>Total</u>
100 <u>Personnel Services – Salaries</u>				
100 Personnel Services – Salaries	56,722.77	56,722.77		113,445.54
Total Personnel Services – Salaries	\$56,722.77	\$56,722.77		\$113,445.54
200 <u>Personnel Services – Employee Benefits</u>				
210 Group Insurance – Contracted Provider	9,000.00	9,000.00		18,000.00
220 Social Security Contributions	4,241.31	4,241.32		8,482.63
230 PSERS Retirement Contributions	18,962.32	18,962.32		37,924.64
260 Workers' Compensation	624.00	624.00		1,248.00
299 All Other Employee Benefits	436.33	436.33		872.66
Total Personnel Services – Employee Benefits	\$33,263.96	\$33,263.97		\$66,527.93
300 <u>Purchased Professional and Technical Services</u>				
329 Professional Educational Services – Other	160.00	160.00		320.00
Total Purchased Professional and Technical Services	\$160.00	\$160.00		\$320.00
Total 2111 Supervision of Student Services – Head of Component	\$90,146.73	\$90,146.74		\$180,293.47

LEA : 114067002 Reading SD

Printed 2/10/2020 9:13:07 AM

General Fund (10)				
2119 Supervision of Student Services – All Other Supervision	<u>Elementary</u>	<u>Secondary</u>	<u>Federal</u>	<u>Total</u>
100 <u>Personnel Services – Salaries</u>				
100 Personnel Services – Salaries	93,521.67	115,968.14		209,489.81
Total Personnel Services – Salaries	\$93,521.67	\$115,968.14		\$209,489.81
200 <u>Personnel Services – Employee Benefits</u>				
210 Group Insurance – Contracted Provider	39,515.04	48,102.58		87,617.62
220 Social Security Contributions	6,835.69	8,801.80		15,637.49
230 PSERS Retirement Contributions	31,055.64	38,408.80		69,464.44
260 Workers' Compensation	1,028.83	1,275.73		2,304.56
Total Personnel Services – Employee Benefits	\$78,435.20	\$96,588.91		\$175,024.11
300 <u>Purchased Professional and Technical Services</u>				
329 Professional Educational Services – Other	35,128.50	35,128.50		70,257.00
330 Other Professional Services	126.00	126.00		252.00
Total Purchased Professional and Technical Services	\$35,254.50	\$35,254.50		\$70,509.00
500 <u>Other Purchased Services</u>				
580 Travel	36.14	36.15		72.29
Total Other Purchased Services	\$36.14	\$36.15		\$72.29
Total 2119 Supervision of Student Services – All Other Supervision	\$207,247.51	\$247,847.70		\$455,095.21

LEA : 114067002 Reading SD

Printed 2/10/2020 9:13:07 AM

General Fund (10)				
2120 Guidance Services	<u>Elementary</u>	<u>Secondary</u>	<u>Federal</u>	<u>Total</u>
100 <u>Personnel Services – Salaries</u>				
100 Personnel Services – Salaries	1,225,949.74	1,706,586.29	132,600.44	3,065,136.47
Total Personnel Services – Salaries	\$1,225,949.74	\$1,706,586.29	\$132,600.44	\$3,065,136.47
200 <u>Personnel Services – Employee Benefits</u>				
210 Group Insurance – Contracted Provider	316,360.84	432,048.62	34,988.16	783,397.62
220 Social Security Contributions	91,247.57	125,550.32	9,735.68	226,533.57
230 PSERS Retirement Contributions	409,391.80	588,512.73	22,156.37	1,020,060.90
260 Workers' Compensation	13,484.83	20,593.44	1,458.60	35,536.87
Total Personnel Services – Employee Benefits	\$830,485.04	\$1,166,705.11	\$68,338.81	\$2,065,528.96
300 <u>Purchased Professional and Technical Services</u>				
329 Professional Educational Services – Other	513.00	1,208.10		1,721.10
330 Other Professional Services		2,234.75		2,234.75
Total Purchased Professional and Technical Services	\$513.00	\$3,442.85		\$3,955.85
600 <u>Supplies</u>				
610 General Supplies		1,557.70		1,557.70
Total Supplies		\$1,557.70		\$1,557.70
Total 2120 Guidance Services	\$2,056,947.78	\$2,878,291.95	\$200,939.25	\$5,136,178.98

LEA : 114067002 Reading SD

Printed 2/10/2020 9:13:07 AM

General Fund (10)				
2130 Attendance Services	<u>Elementary</u>	<u>Secondary</u>	<u>Federal</u>	<u>Total</u>
100 <u>Personnel Services – Salaries</u>				
100 Personnel Services – Salaries				360,452.84
Total Personnel Services – Salaries				\$360,452.84
200 <u>Personnel Services – Employee Benefits</u>				
210 Group Insurance – Contracted Provider				98,653.50
220 Social Security Contributions				27,030.16
230 PSERS Retirement Contributions				120,185.26
250 Unemployment Compensation				(2,663.70)
260 Workers' Compensation				3,964.72
Total Personnel Services – Employee Benefits				\$247,169.94
300 <u>Purchased Professional and Technical Services</u>				
329 Professional Educational Services – Other				190.50
Total Purchased Professional and Technical Services				\$190.50
500 <u>Other Purchased Services</u>				
580 Travel				1,705.27
Total Other Purchased Services				\$1,705.27
Total 2130 Attendance Services				\$609,518.55

LEA : 114067002 Reading SD

Printed 2/10/2020 9:13:07 AM

General Fund (10)				
2140 Psychological Services	<u>Elementary</u>	<u>Secondary</u>	<u>Federal</u>	<u>Total</u>
100 <u>Personnel Services – Salaries</u>				
100 Personnel Services – Salaries	58,441.50	58,441.50	1,049,555.64	1,166,438.64
Total Personnel Services – Salaries	\$58,441.50	\$58,441.50	\$1,049,555.64	\$1,166,438.64
200 <u>Personnel Services – Employee Benefits</u>				
210 Group Insurance – Contracted Provider			244,974.98	244,974.98
220 Social Security Contributions	4,122.60	4,122.61	77,914.96	86,160.17
230 PSERS Retirement Contributions	129,731.80	79,746.97	181,474.83	390,953.60
260 Workers' Compensation	642.89	642.89	11,545.48	12,831.26
Total Personnel Services – Employee Benefits	\$134,497.29	\$84,512.47	\$515,910.25	\$734,920.01
300 <u>Purchased Professional and Technical Services</u>				
322 Professional Educational Services – Ius	60,371.74	136,816.55		197,188.29
330 Other Professional Services	164,771.26	164,771.27		329,542.53
Total Purchased Professional and Technical Services	\$225,143.00	\$301,587.82		\$526,730.82
500 <u>Other Purchased Services</u>				
580 Travel	2,183.70	2,183.70		4,367.40
Total Other Purchased Services	\$2,183.70	\$2,183.70		\$4,367.40
600 <u>Supplies</u>				
610 General Supplies	44,496.81	44,496.81		88,993.62
Total Supplies	\$44,496.81	\$44,496.81		\$88,993.62
Total 2140 Psychological Services	\$464,762.30	\$491,222.30	\$1,565,465.89	\$2,521,450.49

LEA : 114067002 Reading SD

Printed 2/10/2020 9:13:07 AM

General Fund (10)				
2160 Social Work Services	<u>Elementary</u>	<u>Secondary</u>	<u>Federal</u>	<u>Total</u>
100 <u>Personnel Services – Salaries</u>				
100 Personnel Services – Salaries				720,856.83
Total Personnel Services – Salaries				\$720,856.83
200 <u>Personnel Services – Employee Benefits</u>				
210 Group Insurance – Contracted Provider				201,184.16
220 Social Security Contributions				53,165.57
230 PSERS Retirement Contributions				240,824.40
260 Workers' Compensation				3,037.00
Total Personnel Services – Employee Benefits				\$498,211.13
300 <u>Purchased Professional and Technical Services</u>				
329 Professional Educational Services – Other			105,000.00	105,154.80
Total Purchased Professional and Technical Services			\$105,000.00	\$105,154.80
600 <u>Supplies</u>				
610 General Supplies			292.00	292.00
Total Supplies			\$292.00	\$292.00
Total 2160 Social Work Services			\$105,292.00	\$1,324,514.76

LEA : 114067002 Reading SD

Printed 2/10/2020 9:13:07 AM

General Fund (10)

2170 Student Accounting Services	<u>Elementary</u>	<u>Secondary</u>	<u>Federal</u>	<u>Total</u>
100 <u>Personnel Services – Salaries</u>				
100 Personnel Services – Salaries				247,997.26
Total Personnel Services – Salaries				\$247,997.26
200 <u>Personnel Services – Employee Benefits</u>				
210 Group Insurance – Contracted Provider				89,267.46
220 Social Security Contributions				18,412.60
230 PSERS Retirement Contributions				81,883.30
260 Workers' Compensation				2,726.71
Total Personnel Services – Employee Benefits				\$192,290.07
Total 2170 Student Accounting Services				\$440,287.33

LEA : 114067002 Reading SD

Printed 2/10/2020 9:13:07 AM

General Fund (10)				
2190 Other Student Services	<u>Elementary</u>	<u>Secondary</u>	<u>Federal</u>	<u>Total</u>
100 <u>Personnel Services – Salaries</u>				
100 Personnel Services – Salaries			45,009.00	45,009.00
Total Personnel Services – Salaries			\$45,009.00	\$45,009.00
200 <u>Personnel Services – Employee Benefits</u>				
220 Social Security Contributions			3,439.51	3,439.51
230 PSERS Retirement Contributions		7,488.10	7,488.10	14,976.20
260 Workers’ Compensation			495.19	495.19
Total Personnel Services – Employee Benefits		\$7,488.10	\$11,422.80	\$18,910.90
300 <u>Purchased Professional and Technical Services</u>				
322 Professional Educational Services – Ius			25,000.00	25,000.00
323 Professional Educational Services – Other Educational Agencies			3,372.93	3,372.93
329 Professional Educational Services – Other			18,978.86	18,978.86
Total Purchased Professional and Technical Services			\$47,351.79	\$47,351.79
Total 2190 Other Student Services		\$7,488.10	\$103,783.59	\$111,271.69

LEA : 114067002 Reading SD

Printed 2/10/2020 9:13:07 AM

General Fund (10)				
2200 Support Services – Instructional Staff	<u>Elementary</u>	<u>Secondary</u>	<u>Federal</u>	<u>Total</u>
100 <u>Personnel Services – Salaries</u>				
100 Personnel Services – Salaries	1,119,772.82	567,171.10	885,668.14	2,572,612.06
Total Personnel Services – Salaries	\$1,119,772.82	\$567,171.10	\$885,668.14	\$2,572,612.06
200 <u>Personnel Services – Employee Benefits</u>				
210 Group Insurance – Contracted Provider	286,367.78	130,704.08	157,240.48	574,312.34
220 Social Security Contributions	83,777.86	42,447.53	66,223.76	192,449.15
230 PSERS Retirement Contributions	420,218.99	285,693.13	147,483.72	853,395.84
240 Tuition Reimbursement	136,474.04	166,006.13		302,480.17
260 Workers' Compensation	12,317.53	6,229.73	9,738.26	28,285.52
299 All Other Employee Benefits	291.34	291.34		582.68
Total Personnel Services – Employee Benefits	\$939,447.54	\$631,371.94	\$380,686.22	\$1,951,505.70
300 <u>Purchased Professional and Technical Services</u>				
322 Professional Educational Services – Ius	957.50	957.50	197,198.32	199,113.32
329 Professional Educational Services – Other	86,905.10	183,670.39	1,681.55	272,257.04
330 Other Professional Services			174,692.80	174,692.80
360 Employee Training and Development Services			667,188.65	667,188.65
Total Purchased Professional and Technical Services	\$87,862.60	\$184,627.89	\$1,040,761.32	\$1,313,251.81
400 <u>Purchased Property Services</u>				
430 Repairs and Maintenance Services	482.80	300.00		782.80
490 Other Purchased Property Services	4,516.40	1,670.77		6,187.17
Total Purchased Property Services	\$4,999.20	\$1,970.77		\$6,969.97
500 <u>Other Purchased Services</u>				
550 Printing and Binding	2,765.32			2,765.32
580 Travel			42,788.41	42,788.41
Total Other Purchased Services	\$2,765.32		\$42,788.41	\$45,553.73
600 <u>Supplies</u>				
610 General Supplies	7,475.48	8,741.85	16,968.97	33,186.30
640 Books and Periodicals	11,992.03	4,551.97	14,641.75	31,185.75
650 Supplies & Fees – Technology Related			47,185.00	47,185.00
Total Supplies	\$19,467.51	\$13,293.82	\$78,795.72	\$111,557.05
800 <u>Other Objects</u>				
810 Dues and Fees	1,085.00		2,369.95	3,454.95
Total Other Objects	\$1,085.00		\$2,369.95	\$3,454.95
Total 2200 Support Services – Instructional Staff	\$2,175,399.99	\$1,398,435.52	\$2,431,069.76	\$6,004,905.27

LEA : 114067002 Reading SD

Printed 2/10/2020 9:13:07 AM

General Fund (10)				
2210 Supervision of Educational Media Services	<u>Elementary</u>	<u>Secondary</u>	<u>Federal</u>	<u>Total</u>
600 <u>Supplies</u>				
610 General Supplies	1,544.56			1,544.56
Total Supplies	\$1,544.56			\$1,544.56
Total 2210 Supervision of Educational Media Services	\$1,544.56			\$1,544.56

General Fund (10)				
2211 Supervision of Educational Media Services – Head of Component	<u>Elementary</u>	<u>Secondary</u>	<u>Federal</u>	<u>Total</u>
600 <u>Supplies</u>				
610 General Supplies	1,544.56			1,544.56
Total Supplies	\$1,544.56			\$1,544.56
Total 2211 Supervision of Educational Media Services – Head of Component	\$1,544.56			\$1,544.56

LEA : 114067002 Reading SD

Printed 2/10/2020 9:13:07 AM

General Fund (10)				
2220 Technology Support Services	<u>Elementary</u>	<u>Secondary</u>	<u>Federal</u>	<u>Total</u>
100 <u>Personnel Services – Salaries</u>				
100 Personnel Services – Salaries		42,802.50		42,802.50
Total Personnel Services – Salaries		\$42,802.50		\$42,802.50
200 <u>Personnel Services – Employee Benefits</u>				
210 Group Insurance – Contracted Provider		18,000.00		18,000.00
220 Social Security Contributions		3,191.76		3,191.76
230 PSERS Retirement Contributions		14,308.84		14,308.84
260 Workers' Compensation		470.86		470.86
Total Personnel Services – Employee Benefits		\$35,971.46		\$35,971.46
300 <u>Purchased Professional and Technical Services</u>				
330 Other Professional Services			35,547.75	35,547.75
Total Purchased Professional and Technical Services			\$35,547.75	\$35,547.75
400 <u>Purchased Property Services</u>				
430 Repairs and Maintenance Services	380.69	300.00		680.69
Total Purchased Property Services	\$380.69	\$300.00		\$680.69
600 <u>Supplies</u>				
610 General Supplies	5,240.75	3,916.19		9,156.94
Total Supplies	\$5,240.75	\$3,916.19		\$9,156.94
Total 2220 Technology Support Services	\$5,621.44	\$82,990.15	\$35,547.75	\$124,159.34

LEA : 114067002 Reading SD

Printed 2/10/2020 9:13:07 AM

General Fund (10)

2240 Computer-Assisted Instruction Support Services

	<u>Elementary</u>	<u>Secondary</u>	<u>Federal</u>	<u>Total</u>
600 <u>Supplies</u>				
610 General Supplies	50.00			50.00
Total Supplies	\$50.00			\$50.00
Total 2240 Computer-Assisted Instruction Support Services	\$50.00			\$50.00

LEA : 114067002 Reading SD

Printed 2/10/2020 9:13:07 AM

General Fund (10)				
2250 School Library Services	<u>Elementary</u>	<u>Secondary</u>	<u>Federal</u>	<u>Total</u>
100 <u>Personnel Services – Salaries</u>				
100 Personnel Services – Salaries	758,965.97	291,744.14		1,050,710.11
Total Personnel Services – Salaries	\$758,965.97	\$291,744.14		\$1,050,710.11
200 <u>Personnel Services – Employee Benefits</u>				
210 Group Insurance – Contracted Provider	190,425.24	68,885.08		259,310.32
220 Social Security Contributions	56,787.27	21,839.21		78,626.48
230 PSERS Retirement Contributions	253,579.40	93,428.40		347,007.80
260 Workers' Compensation	8,348.71	3,208.97		11,557.68
Total Personnel Services – Employee Benefits	\$509,140.62	\$187,361.66		\$696,502.28
300 <u>Purchased Professional and Technical Services</u>				
329 Professional Educational Services – Other	13,149.35	2,914.65		16,064.00
Total Purchased Professional and Technical Services	\$13,149.35	\$2,914.65		\$16,064.00
400 <u>Purchased Property Services</u>				
430 Repairs and Maintenance Services	102.11			102.11
Total Purchased Property Services	\$102.11			\$102.11
600 <u>Supplies</u>				
610 General Supplies	200.00	2,412.47		2,612.47
640 Books and Periodicals	11,992.03	4,551.97		16,544.00
Total Supplies	\$12,192.03	\$6,964.44		\$19,156.47
Total 2250 School Library Services	\$1,293,550.08	\$488,984.89		\$1,782,534.97

LEA : 114067002 Reading SD

Printed 2/10/2020 9:13:07 AM

General Fund (10)				
2260 Instruction and Curriculum Development Services	<u>Elementary</u>	<u>Secondary</u>	<u>Federal</u>	<u>Total</u>
100 <u>Personnel Services – Salaries</u>				
100 Personnel Services – Salaries	341,876.85	214,883.46	4,961.25	561,721.56
Total Personnel Services – Salaries	\$341,876.85	\$214,883.46	\$4,961.25	\$561,721.56
200 <u>Personnel Services – Employee Benefits</u>				
210 Group Insurance – Contracted Provider	95,942.54	43,819.00		139,761.54
220 Social Security Contributions	25,542.24	16,059.16	379.56	41,980.96
230 PSERS Retirement Contributions	113,817.64	71,965.05	826.71	186,609.40
260 Workers' Compensation	3,760.55	2,363.64	54.59	6,178.78
299 All Other Employee Benefits	291.34	291.34		582.68
Total Personnel Services – Employee Benefits	\$239,354.31	\$134,498.19	\$1,260.86	\$375,113.36
300 <u>Purchased Professional and Technical Services</u>				
322 Professional Educational Services – lus	957.50	957.50		1,915.00
329 Professional Educational Services – Other	73,755.75	180,755.74		254,511.49
Total Purchased Professional and Technical Services	\$74,713.25	\$181,713.24		\$256,426.49
400 <u>Purchased Property Services</u>				
490 Other Purchased Property Services	4,516.40	1,670.77		6,187.17
Total Purchased Property Services	\$4,516.40	\$1,670.77		\$6,187.17
500 <u>Other Purchased Services</u>				
550 Printing and Binding	2,765.32			2,765.32
Total Other Purchased Services	\$2,765.32			\$2,765.32
600 <u>Supplies</u>				
610 General Supplies	440.17	246.87		687.04
650 Supplies & Fees – Technology Related			2,485.00	2,485.00
Total Supplies	\$440.17	\$246.87	\$2,485.00	\$3,172.04
Total 2260 Instruction and Curriculum Development Services	\$663,666.30	\$533,012.53	\$8,707.11	\$1,205,385.94

LEA : 114067002 Reading SD

Printed 2/10/2020 9:13:07 AM

General Fund (10)				
2270 Instructional Staff Professional Development Services	<u>Elementary</u>	<u>Secondary</u>	<u>Federal</u>	<u>Total</u>
100 <u>Personnel Services – Salaries</u>				
100 Personnel Services – Salaries	18,930.00	17,741.00	880,706.89	917,377.89
Total Personnel Services – Salaries	\$18,930.00	\$17,741.00	\$880,706.89	\$917,377.89
200 <u>Personnel Services – Employee Benefits</u>				
210 Group Insurance – Contracted Provider			157,240.48	157,240.48
220 Social Security Contributions	1,448.35	1,357.40	65,844.20	68,649.95
230 PSERS Retirement Contributions	52,821.95	105,990.84	146,657.01	305,469.80
240 Tuition Reimbursement	136,474.04	166,006.13		302,480.17
260 Workers' Compensation	208.27	186.26	9,683.67	10,078.20
Total Personnel Services – Employee Benefits	\$190,952.61	\$273,540.63	\$379,425.36	\$843,918.60
300 <u>Purchased Professional and Technical Services</u>				
322 Professional Educational Services – lus			197,198.32	197,198.32
329 Professional Educational Services – Other			1,681.55	1,681.55
330 Other Professional Services			6,163.50	6,163.50
360 Employee Training and Development Services			667,188.65	667,188.65
Total Purchased Professional and Technical Services			\$872,232.02	\$872,232.02
500 <u>Other Purchased Services</u>				
580 Travel			42,788.41	42,788.41
Total Other Purchased Services			\$42,788.41	\$42,788.41
600 <u>Supplies</u>				
610 General Supplies		2,166.32	16,968.97	19,135.29
640 Books and Periodicals			14,641.75	14,641.75
650 Supplies & Fees – Technology Related			44,700.00	44,700.00
Total Supplies		\$2,166.32	\$76,310.72	\$78,477.04
800 <u>Other Objects</u>				
810 Dues and Fees	1,085.00		2,369.95	3,454.95
Total Other Objects	\$1,085.00		\$2,369.95	\$3,454.95
Total 2270 Instructional Staff Professional Development Services	\$210,967.61	\$293,447.95	\$2,253,833.35	\$2,758,248.91

LEA : 114067002 Reading SD

Printed 2/10/2020 9:13:07 AM

General Fund (10)

2280 Nonpublic Support Services

	<u>Elementary</u>	<u>Secondary</u>	<u>Federal</u>	<u>Total</u>
300 <u>Purchased Professional and Technical Services</u>				
330 Other Professional Services			132,981.55	132,981.55
Total Purchased Professional and Technical Services			\$132,981.55	\$132,981.55
Total 2280 Nonpublic Support Services			\$132,981.55	\$132,981.55

LEA : 114067002 Reading SD

Printed 2/10/2020 9:13:07 AM

General Fund (10)				
2300 Support Services – Administration	<u>Elementary</u>	<u>Secondary</u>	<u>Federal</u>	<u>Total</u>
100 <u>Personnel Services – Salaries</u>				
100 Personnel Services – Salaries	3,286,550.47	2,966,224.96		7,259,012.17
Total Personnel Services – Salaries	\$3,286,550.47	\$2,966,224.96		\$7,259,012.17
200 <u>Personnel Services – Employee Benefits</u>				
210 Group Insurance – Contracted Provider	493,504.68	476,840.58		1,152,882.13
220 Social Security Contributions	243,642.55	235,573.90		547,126.59
230 PSERS Retirement Contributions	1,081,919.72	1,035,157.20		2,448,761.23
250 Unemployment Compensation	16,958.00	9,935.37		30,301.32
260 Workers' Compensation	37,793.51	36,109.14		85,024.08
280 Other Post-Employment Benefits (OPEB)				6,153,644.60
299 All Other Employee Benefits	863.02	(36,707.65)		727.61
Total Personnel Services – Employee Benefits	\$1,874,681.48	\$1,756,908.54		\$10,418,467.56
300 <u>Purchased Professional and Technical Services</u>				
329 Professional Educational Services – Other	11,480.01	11,480.01		29,410.02
330 Other Professional Services				1,180,671.15
Total Purchased Professional and Technical Services	\$11,480.01	\$11,480.01		\$1,210,081.17
400 <u>Purchased Property Services</u>				
440 Rentals	124,610.51	124,610.53		249,221.04
Total Purchased Property Services	\$124,610.51	\$124,610.53		\$249,221.04
500 <u>Other Purchased Services</u>				
520 Insurance – General				97,139.00
530 Communications	36,083.89	35,232.15		71,316.04
549 Other Advertising/Public Relations			324.60	324.60
550 Printing and Binding	150.00	5,094.70		5,582.70
580 Travel		672.32		17,463.86
599 Other Miscellaneous Purchased Services				9,587.60
Total Other Purchased Services	\$36,233.89	\$40,999.17	\$324.60	\$201,413.80
600 <u>Supplies</u>				
610 General Supplies	15,382.84	2,880.22		74,697.68
630 Food		578.78		7,217.09
640 Books and Periodicals	417.93			693.43
650 Supplies & Fees – Technology Related				1,674.96
Total Supplies	\$15,800.77	\$3,459.00		\$84,283.16
800 <u>Other Objects</u>				
810 Dues and Fees				52,709.25
820 Claims and Judgments Against the LEA				110,650.00
890 Miscellaneous Expenditures				2,918.01
Total Other Objects				\$166,277.26
Total 2300 Support Services – Administration	\$5,349,357.13	\$4,903,682.21	\$324.60	\$19,588,756.16

LEA : 114067002 Reading SD

Printed 2/10/2020 9:13:07 AM

General Fund (10)				
2310 Board Services				
	<u>Elementary</u>	<u>Secondary</u>	<u>Federal</u>	<u>Total</u>
100 <u>Personnel Services – Salaries</u>				
100 Personnel Services – Salaries				15,000.00
Total Personnel Services – Salaries				\$15,000.00
200 <u>Personnel Services – Employee Benefits</u>				
220 Social Security Contributions				1,147.55
230 PSERS Retirement Contributions				5,025.31
260 Workers’ Compensation				165.00
Total Personnel Services – Employee Benefits				\$6,337.86
300 <u>Purchased Professional and Technical Services</u>				
329 Professional Educational Services – Other				6,450.00
330 Other Professional Services				149,430.26
Total Purchased Professional and Technical Services				\$155,880.26
500 <u>Other Purchased Services</u>				
520 Insurance – General				96,981.00
549 Other Advertising/Public Relations			324.60	324.60
580 Travel				9,359.91
Total Other Purchased Services			\$324.60	\$106,665.51
600 <u>Supplies</u>				
610 General Supplies				3,370.05
630 Food				2,052.76
Total Supplies				\$5,422.81
800 <u>Other Objects</u>				
810 Dues and Fees				38,694.73
820 Claims and Judgments Against the LEA				110,650.00
890 Miscellaneous Expenditures				1,426.07
Total Other Objects				\$150,770.80
Total 2310 Board Services			\$324.60	\$440,077.24

LEA : 114067002 Reading SD

Printed 2/10/2020 9:13:07 AM

General Fund (10)				
2330 Tax Assessment and Collection Services	<u>Elementary</u>	<u>Secondary</u>	<u>Federal</u>	<u>Total</u>
100 <u>Personnel Services – Salaries</u>				
100 Personnel Services – Salaries				85,688.53
Total Personnel Services – Salaries				\$85,688.53
200 <u>Personnel Services – Employee Benefits</u>				
210 Group Insurance – Contracted Provider				34,937.63
220 Social Security Contributions				6,292.54
230 PSERS Retirement Contributions				26,844.66
260 Workers' Compensation				942.59
Total Personnel Services – Employee Benefits				\$69,017.42
500 <u>Other Purchased Services</u>				
520 Insurance – General				158.00
Total Other Purchased Services				\$158.00
600 <u>Supplies</u>				
610 General Supplies				45,740.02
Total Supplies				\$45,740.02
Total 2330 Tax Assessment and Collection Services				\$200,603.97

LEA : 114067002 Reading SD

Printed 2/10/2020 9:13:07 AM

General Fund (10)

2340 Staff Relations and Negotiations Services

Elementary Secondary Federal Total

100 <u>Personnel Services – Salaries</u>				
100 Personnel Services – Salaries				287.73
Total Personnel Services – Salaries				\$287.73
200 <u>Personnel Services – Employee Benefits</u>				
220 Social Security Contributions				21.57
230 PSERS Retirement Contributions				96.16
260 Workers’ Compensation				3.20
280 Other Post-Employment Benefits (OPEB)				6,153,644.60
299 All Other Employee Benefits				17,700.00
Total Personnel Services – Employee Benefits				\$6,171,465.53
300 <u>Purchased Professional and Technical Services</u>				
330 Other Professional Services				(1,423.60)
Total Purchased Professional and Technical Services				(\$1,423.60)
Total 2340 Staff Relations and Negotiations Services				\$6,170,329.66

LEA : 114067002 Reading SD

Printed 2/10/2020 9:13:07 AM

General Fund (10)

2350 Legal and Accounting Services	<u>Elementary</u>	<u>Secondary</u>	<u>Federal</u>	<u>Total</u>
300 <u>Purchased Professional and Technical Services</u>				
330 Other Professional Services				1,023,383.09
Total Purchased Professional and Technical Services				\$1,023,383.09
Total 2350 Legal and Accounting Services				\$1,023,383.09

LEA : 114067002 Reading SD

Printed 2/10/2020 9:13:07 AM

General Fund (10)				
2360 Office of the Superintendent / Executive Director Services	<u>Elementary</u>	<u>Secondary</u>	<u>Federal</u>	<u>Total</u>
100 <u>Personnel Services – Salaries</u>				
100 Personnel Services – Salaries				617,457.93
Total Personnel Services – Salaries				\$617,457.93
200 <u>Personnel Services – Employee Benefits</u>				
210 Group Insurance – Contracted Provider				66,936.00
220 Social Security Contributions				39,208.05
230 PSERS Retirement Contributions				204,558.64
260 Workers' Compensation				6,846.86
299 All Other Employee Benefits				18,068.00
Total Personnel Services – Employee Benefits				\$335,617.55
300 <u>Purchased Professional and Technical Services</u>				
330 Other Professional Services				9,281.40
Total Purchased Professional and Technical Services				\$9,281.40
500 <u>Other Purchased Services</u>				
530 Communications	35,232.14	35,232.15		70,464.29
550 Printing and Binding				338.00
580 Travel				6,629.66
599 Other Miscellaneous Purchased Services				9,587.60
Total Other Purchased Services	\$35,232.14	\$35,232.15		\$87,019.55
600 <u>Supplies</u>				
610 General Supplies				7,324.55
630 Food				4,585.55
640 Books and Periodicals				225.68
Total Supplies				\$12,135.78
800 <u>Other Objects</u>				
810 Dues and Fees				12,875.50
890 Miscellaneous Expenditures				1,491.94
Total Other Objects				\$14,367.44
Total 2360 Office of the Superintendent / Executive Director Services	\$35,232.14	\$35,232.15		\$1,075,879.65

LEA : 114067002 Reading SD

Printed 2/10/2020 9:13:07 AM

General Fund (10)				
2380 Office of the Principal Services	<u>Elementary</u>	<u>Secondary</u>	<u>Federal</u>	<u>Total</u>
100 <u>Personnel Services – Salaries</u>				
100 Personnel Services – Salaries	3,286,550.47	2,966,224.96		6,252,775.43
Total Personnel Services – Salaries	\$3,286,550.47	\$2,966,224.96		\$6,252,775.43
200 <u>Personnel Services – Employee Benefits</u>				
210 Group Insurance – Contracted Provider	493,504.68	476,840.58		970,345.26
220 Social Security Contributions	243,642.55	235,573.90		479,216.45
230 PSERS Retirement Contributions	1,081,919.72	1,035,157.20		2,117,076.92
250 Unemployment Compensation	16,958.00	9,935.37		26,893.37
260 Workers' Compensation	37,793.51	36,109.14		73,902.65
299 All Other Employee Benefits	863.02	(36,707.65)		(35,844.63)
Total Personnel Services – Employee Benefits	\$1,874,681.48	\$1,756,908.54		\$3,631,590.02
300 <u>Purchased Professional and Technical Services</u>				
329 Professional Educational Services – Other	11,480.01	11,480.01		22,960.02
Total Purchased Professional and Technical Services	\$11,480.01	\$11,480.01		\$22,960.02
400 <u>Purchased Property Services</u>				
440 Rentals	124,610.51	124,610.53		249,221.04
Total Purchased Property Services	\$124,610.51	\$124,610.53		\$249,221.04
500 <u>Other Purchased Services</u>				
530 Communications	851.75			851.75
550 Printing and Binding	150.00	5,094.70		5,244.70
580 Travel		672.32		672.32
Total Other Purchased Services	\$1,001.75	\$5,767.02		\$6,768.77
600 <u>Supplies</u>				
610 General Supplies	15,382.84	2,880.22		18,263.06
630 Food		578.78		578.78
640 Books and Periodicals	417.93			417.93
Total Supplies	\$15,800.77	\$3,459.00		\$19,259.77
Total 2380 Office of the Principal Services	\$5,314,124.99	\$4,868,450.06		\$10,182,575.05

LEA : 114067002 Reading SD

Printed 2/10/2020 9:13:07 AM

General Fund (10)				
2390 Other Administration Services	<u>Elementary</u>	<u>Secondary</u>	<u>Federal</u>	<u>Total</u>
100 <u>Personnel Services – Salaries</u>				
100 Personnel Services – Salaries				287,802.55
Total Personnel Services – Salaries				\$287,802.55
200 <u>Personnel Services – Employee Benefits</u>				
210 Group Insurance – Contracted Provider				80,663.24
220 Social Security Contributions				21,240.43
230 PSERS Retirement Contributions				95,159.54
250 Unemployment Compensation				3,407.95
260 Workers' Compensation				3,163.78
299 All Other Employee Benefits				804.24
Total Personnel Services – Employee Benefits				\$204,439.18
500 <u>Other Purchased Services</u>				
580 Travel				801.97
Total Other Purchased Services				\$801.97
600 <u>Supplies</u>				
640 Books and Periodicals				49.82
650 Supplies & Fees – Technology Related				1,674.96
Total Supplies				\$1,724.78
800 <u>Other Objects</u>				
810 Dues and Fees				1,139.02
Total Other Objects				\$1,139.02
Total 2390 Other Administration Services				\$495,907.50

LEA : 114067002 Reading SD

Printed 2/10/2020 9:13:07 AM

General Fund (10)				
2400 Support Services – Pupil Health	<u>Elementary</u>	<u>Secondary</u>	<u>Federal</u>	<u>Total</u>
100 <u>Personnel Services – Salaries</u>				
100 Personnel Services – Salaries				1,696,013.26
Total Personnel Services – Salaries				\$1,696,013.26
200 <u>Personnel Services – Employee Benefits</u>				
210 Group Insurance – Contracted Provider				444,444.00
220 Social Security Contributions				126,355.09
230 PSERS Retirement Contributions				566,528.60
260 Workers' Compensation				18,656.16
Total Personnel Services – Employee Benefits				\$1,155,983.85
300 <u>Purchased Professional and Technical Services</u>				
329 Professional Educational Services – Other				90,128.44
330 Other Professional Services			1,047,042.17	1,047,042.17
Total Purchased Professional and Technical Services			\$1,047,042.17	\$1,137,170.61
500 <u>Other Purchased Services</u>				
550 Printing and Binding				2,345.45
580 Travel				2,160.82
Total Other Purchased Services				\$4,506.27
600 <u>Supplies</u>				
610 General Supplies				80,081.71
Total Supplies				\$80,081.71
Total 2400 Support Services – Pupil Health			\$1,047,042.17	\$4,073,755.70

LEA : 114067002 Reading SD

Printed 2/10/2020 9:13:07 AM

General Fund (10)

2410 Supervision of Health Services	<u>Elementary</u>	<u>Secondary</u>	<u>Federal</u>	<u>Total</u>
100 <u>Personnel Services – Salaries</u>				
100 Personnel Services – Salaries				110,687.40
Total Personnel Services – Salaries				\$110,687.40
200 <u>Personnel Services – Employee Benefits</u>				
210 Group Insurance – Contracted Provider				18,000.00
220 Social Security Contributions				8,336.48
230 PSERS Retirement Contributions				36,720.32
260 Workers' Compensation				1,217.51
Total Personnel Services – Employee Benefits				\$64,274.31
Total 2410 Supervision of Health Services				\$174,961.71

LEA : 114067002 Reading SD

Printed 2/10/2020 9:13:07 AM

General Fund (10)

2411 Supervision of Health Services – Head of Component	<u>Elementary</u>	<u>Secondary</u>	<u>Federal</u>	<u>Total</u>
100 <u>Personnel Services – Salaries</u>				
100 Personnel Services – Salaries				110,687.40
Total Personnel Services – Salaries				\$110,687.40
200 <u>Personnel Services – Employee Benefits</u>				
210 Group Insurance – Contracted Provider				18,000.00
220 Social Security Contributions				8,336.48
230 PSERS Retirement Contributions				36,720.32
260 Workers' Compensation				1,217.51
Total Personnel Services – Employee Benefits				\$64,274.31
Total 2411 Supervision of Health Services – Head of Component				\$174,961.71

LEA : 114067002 Reading SD

Printed 2/10/2020 9:13:07 AM

General Fund (10)

2420 Medical Services

300 Purchased Professional and Technical Services

	<u>Elementary</u>	<u>Secondary</u>	<u>Federal</u>	<u>Total</u>
330 Other Professional Services			864,739.47	864,739.47
Total Purchased Professional and Technical Services			\$864,739.47	\$864,739.47
Total 2420 Medical Services			\$864,739.47	\$864,739.47

LEA : 114067002 Reading SD

Printed 2/10/2020 9:13:07 AM

General Fund (10)

2430 Dental Services

	<u>Elementary</u>	<u>Secondary</u>	<u>Federal</u>	<u>Total</u>
100 <u>Personnel Services – Salaries</u>				
100 Personnel Services – Salaries				147,743.96
Total Personnel Services – Salaries				\$147,743.96
200 <u>Personnel Services – Employee Benefits</u>				
210 Group Insurance – Contracted Provider				34,988.16
220 Social Security Contributions				11,046.16
230 PSERS Retirement Contributions				49,391.16
260 Workers' Compensation				1,625.26
Total Personnel Services – Employee Benefits				\$97,050.74
500 <u>Other Purchased Services</u>				
550 Printing and Binding				165.00
Total Other Purchased Services				\$165.00
600 <u>Supplies</u>				
610 General Supplies				35,716.48
Total Supplies				\$35,716.48
Total 2430 Dental Services				\$280,676.18

LEA : 114067002 Reading SD

Printed 2/10/2020 9:13:07 AM

General Fund (10)				
2440 Nursing Services	<u>Elementary</u>	<u>Secondary</u>	<u>Federal</u>	<u>Total</u>
100 <u>Personnel Services – Salaries</u>				
100 Personnel Services – Salaries				1,437,581.90
Total Personnel Services – Salaries				\$1,437,581.90
200 <u>Personnel Services – Employee Benefits</u>				
210 Group Insurance – Contracted Provider				391,455.84
220 Social Security Contributions				106,972.45
230 PSERS Retirement Contributions				480,417.12
260 Workers' Compensation				15,813.39
Total Personnel Services – Employee Benefits				\$994,658.80
300 <u>Purchased Professional and Technical Services</u>				
329 Professional Educational Services – Other				90,128.44
330 Other Professional Services			182,302.70	182,302.70
Total Purchased Professional and Technical Services			\$182,302.70	\$272,431.14
500 <u>Other Purchased Services</u>				
550 Printing and Binding				2,180.45
580 Travel				2,160.82
Total Other Purchased Services				\$4,341.27
600 <u>Supplies</u>				
610 General Supplies				44,365.23
Total Supplies				\$44,365.23
Total 2440 Nursing Services			\$182,302.70	\$2,753,378.34

LEA : 114067002 Reading SD

Printed 2/10/2020 9:13:07 AM

General Fund (10)				
2500 Support Services – Business	<u>Elementary</u>	<u>Secondary</u>	<u>Federal</u>	<u>Total</u>
100 <u>Personnel Services – Salaries</u>				
100 Personnel Services – Salaries				869,640.88
Total Personnel Services – Salaries				\$869,640.88
200 <u>Personnel Services – Employee Benefits</u>				
210 Group Insurance – Contracted Provider				244,360.98
220 Social Security Contributions				63,288.58
230 PSERS Retirement Contributions				288,636.95
260 Workers' Compensation				197,203.83
299 All Other Employee Benefits				10,498.00
Total Personnel Services – Employee Benefits				\$803,988.34
300 <u>Purchased Professional and Technical Services</u>				
310 Official / Administrative Services				42,384.68
330 Other Professional Services				59,982.30
390 Other Purchased Professional and Technical Services				4,158.48
Total Purchased Professional and Technical Services				\$106,525.46
400 <u>Purchased Property Services</u>				
410 Cleaning Services				5,013.44
430 Repairs and Maintenance Services				868.00
440 Rentals				37,891.15
Total Purchased Property Services				\$43,772.59
500 <u>Other Purchased Services</u>				
520 Insurance – General				236.00
530 Communications				2,865.63
550 Printing and Binding				303.00
580 Travel				990.02
Total Other Purchased Services				\$4,394.65
600 <u>Supplies</u>				
610 General Supplies				56,668.20
640 Books and Periodicals				225.68
650 Supplies & Fees – Technology Related				30,550.00
Total Supplies				\$87,443.88
800 <u>Other Objects</u>				
810 Dues and Fees				85,367.98
890 Miscellaneous Expenditures				17,475.00
Total Other Objects				\$102,842.98
Total 2500 Support Services – Business				\$2,018,608.78

LEA : 114067002 Reading SD

Printed 2/10/2020 9:13:07 AM

General Fund (10)				
2510 Fiscal Services	<u>Elementary</u>	<u>Secondary</u>	<u>Federal</u>	<u>Total</u>
100 <u>Personnel Services – Salaries</u>				
100 Personnel Services – Salaries				766,818.87
Total Personnel Services – Salaries				\$766,818.87
200 <u>Personnel Services – Employee Benefits</u>				
210 Group Insurance – Contracted Provider				208,587.60
220 Social Security Contributions				55,702.95
230 PSERS Retirement Contributions				254,586.19
260 Workers' Compensation				196,072.90
299 All Other Employee Benefits				10,498.00
Total Personnel Services – Employee Benefits				\$725,447.64
300 <u>Purchased Professional and Technical Services</u>				
310 Official / Administrative Services				42,384.68
330 Other Professional Services				59,982.30
390 Other Purchased Professional and Technical Services				4,158.48
Total Purchased Professional and Technical Services				\$106,525.46
400 <u>Purchased Property Services</u>				
410 Cleaning Services				5,013.44
430 Repairs and Maintenance Services				868.00
440 Rentals				10,949.55
Total Purchased Property Services				\$16,830.99
500 <u>Other Purchased Services</u>				
520 Insurance – General				236.00
530 Communications				2,240.45
550 Printing and Binding				104.00
580 Travel				977.26
Total Other Purchased Services				\$3,557.71
600 <u>Supplies</u>				
610 General Supplies				18,484.39
640 Books and Periodicals				225.68
650 Supplies & Fees – Technology Related				24,550.00
Total Supplies				\$43,260.07
800 <u>Other Objects</u>				
810 Dues and Fees				85,367.98
890 Miscellaneous Expenditures				17,475.00
Total Other Objects				\$102,842.98
Total 2510 Fiscal Services				\$1,765,283.72

LEA : 114067002 Reading SD

Printed 2/10/2020 9:13:07 AM

General Fund (10)				
2511 Supervision of Fiscal Services - Head of Component	<u>Elementary</u>	<u>Secondary</u>	<u>Federal</u>	<u>Total</u>
100 <u>Personnel Services – Salaries</u>				
100 Personnel Services – Salaries				196,668.60
Total Personnel Services – Salaries				\$196,668.60
200 <u>Personnel Services – Employee Benefits</u>				
210 Group Insurance – Contracted Provider				36,000.00
220 Social Security Contributions				13,779.95
230 PSERS Retirement Contributions				65,629.20
260 Workers' Compensation				2,163.41
299 All Other Employee Benefits				10,498.00
Total Personnel Services – Employee Benefits				\$128,070.56
500 <u>Other Purchased Services</u>				
520 Insurance – General				236.00
Total Other Purchased Services				\$236.00
600 <u>Supplies</u>				
610 General Supplies				1,119.00
640 Books and Periodicals				225.68
Total Supplies				\$1,344.68
800 <u>Other Objects</u>				
810 Dues and Fees				1,217.09
890 Miscellaneous Expenditures				75.00
Total Other Objects				\$1,292.09
Total 2511 Supervision of Fiscal Services - Head of Component				\$327,611.93

LEA : 114067002 Reading SD

Printed 2/10/2020 9:13:07 AM

General Fund (10)				
2512 Budgeting Services	<u>Elementary</u>	<u>Secondary</u>	<u>Federal</u>	<u>Total</u>
600 <u>Supplies</u>				
610 General Supplies				29.48
Total Supplies				\$29.48
Total 2512 Budgeting Services				\$29.48

LEA : 114067002 Reading SD

Printed 2/10/2020 9:13:07 AM

General Fund (10)

2514 Payroll Services	<u>Elementary</u>	<u>Secondary</u>	<u>Federal</u>	<u>Total</u>
100 <u>Personnel Services – Salaries</u>				
100 Personnel Services – Salaries				145,491.15
Total Personnel Services – Salaries				\$145,491.15
200 <u>Personnel Services – Employee Benefits</u>				
210 Group Insurance – Contracted Provider				54,092.38
220 Social Security Contributions				10,193.45
230 PSERS Retirement Contributions				48,183.04
260 Workers' Compensation				1,595.76
Total Personnel Services – Employee Benefits				\$114,064.63
300 <u>Purchased Professional and Technical Services</u>				
330 Other Professional Services				25,101.40
Total Purchased Professional and Technical Services				\$25,101.40
500 <u>Other Purchased Services</u>				
580 Travel				170.05
Total Other Purchased Services				\$170.05
Total 2514 Payroll Services				\$284,827.23

LEA : 114067002 Reading SD

Printed 2/10/2020 9:13:07 AM

General Fund (10)				
2515 Financial Accounting Services	<u>Elementary</u>	<u>Secondary</u>	<u>Federal</u>	<u>Total</u>
100 <u>Personnel Services – Salaries</u>				
100 Personnel Services – Salaries				268,945.07
Total Personnel Services – Salaries				\$268,945.07
200 <u>Personnel Services – Employee Benefits</u>				
210 Group Insurance – Contracted Provider				54,000.00
220 Social Security Contributions				20,110.78
230 PSERS Retirement Contributions				88,970.44
260 Workers' Compensation				190,602.89
Total Personnel Services – Employee Benefits				\$353,684.11
300 <u>Purchased Professional and Technical Services</u>				
310 Official / Administrative Services				42,384.68
330 Other Professional Services				34,880.90
390 Other Purchased Professional and Technical Services				4,158.48
Total Purchased Professional and Technical Services				\$81,424.06
400 <u>Purchased Property Services</u>				
410 Cleaning Services				5,013.44
430 Repairs and Maintenance Services				868.00
440 Rentals				10,949.55
Total Purchased Property Services				\$16,830.99
500 <u>Other Purchased Services</u>				
530 Communications				2,240.45
550 Printing and Binding				104.00
580 Travel				807.21
Total Other Purchased Services				\$3,151.66
600 <u>Supplies</u>				
610 General Supplies				17,335.91
Total Supplies				\$17,335.91
800 <u>Other Objects</u>				
810 Dues and Fees				84,150.89
Total Other Objects				\$84,150.89
Total 2515 Financial Accounting Services				\$825,522.69

General Fund (10)				
2517 Property Accounting Services	<u>Elementary</u>	<u>Secondary</u>	<u>Federal</u>	<u>Total</u>
600 <u>Supplies</u>				
650 Supplies & Fees – Technology Related				2,850.00
Total Supplies				\$2,850.00
Total 2517 Property Accounting Services				\$2,850.00

LEA : 114067002 Reading SD

Printed 2/10/2020 9:13:07 AM

General Fund (10)				
2519 Other Fiscal Services	<u>Elementary</u>	<u>Secondary</u>	<u>Federal</u>	<u>Total</u>
100 <u>Personnel Services – Salaries</u>				
100 Personnel Services – Salaries				155,714.05
Total Personnel Services – Salaries				\$155,714.05
200 <u>Personnel Services – Employee Benefits</u>				
210 Group Insurance – Contracted Provider				64,495.22
220 Social Security Contributions				11,618.77
230 PSERS Retirement Contributions				51,803.51
260 Workers' Compensation				1,710.84
Total Personnel Services – Employee Benefits				\$129,628.34
600 <u>Supplies</u>				
650 Supplies & Fees – Technology Related				21,700.00
Total Supplies				\$21,700.00
800 <u>Other Objects</u>				
890 Miscellaneous Expenditures				17,400.00
Total Other Objects				\$17,400.00
Total 2519 Other Fiscal Services				\$324,442.39

LEA : 114067002 Reading SD

Printed 2/10/2020 9:13:07 AM

General Fund (10)

2520 Purchasing Services	<u>Elementary</u>	<u>Secondary</u>	<u>Federal</u>	<u>Total</u>
100 <u>Personnel Services – Salaries</u>				
100 Personnel Services – Salaries				102,822.01
Total Personnel Services – Salaries				\$102,822.01
200 <u>Personnel Services – Employee Benefits</u>				
210 Group Insurance – Contracted Provider				35,773.38
220 Social Security Contributions				7,585.63
230 PSERS Retirement Contributions				34,050.76
260 Workers' Compensation				1,130.93
Total Personnel Services – Employee Benefits				\$78,540.70
500 <u>Other Purchased Services</u>				
580 Travel				12.76
Total Other Purchased Services				\$12.76
600 <u>Supplies</u>				
610 General Supplies				3,334.88
650 Supplies & Fees – Technology Related				6,000.00
Total Supplies				\$9,334.88
Total 2520 Purchasing Services				\$190,710.35

General Fund (10)

2530 Warehousing and Distributing Services	<u>Elementary</u>	<u>Secondary</u>	<u>Federal</u>	<u>Total</u>
400 <u>Purchased Property Services</u>				
440 Rentals				26,941.60
Total Purchased Property Services				\$26,941.60
500 <u>Other Purchased Services</u>				
530 Communications				625.18
Total Other Purchased Services				\$625.18
Total 2530 Warehousing and Distributing Services				\$27,566.78

LEA : 114067002 Reading SD

Printed 2/10/2020 9:13:07 AM

General Fund (10)				
2540 Printing, Publishing and Duplicating Services	<u>Elementary</u>	<u>Secondary</u>	<u>Federal</u>	<u>Total</u>
600 <u>Supplies</u>				
610 General Supplies				34,602.44
Total Supplies				\$34,602.44
Total 2540 Printing, Publishing and Duplicating Services				\$34,602.44

LEA : 114067002 Reading SD

Printed 2/10/2020 9:13:07 AM

General Fund (10)

2590 Other Support Services – Business	<u>Elementary</u>	<u>Secondary</u>	<u>Federal</u>	<u>Total</u>
500 <u>Other Purchased Services</u>				
550 Printing and Binding				199.00
Total Other Purchased Services				\$199.00
600 <u>Supplies</u>				
610 General Supplies				246.49
Total Supplies				\$246.49
Total 2590 Other Support Services – Business				\$445.49

LEA : 114067002 Reading SD

Printed 2/10/2020 9:13:07 AM

General Fund (10)				
2600 Operation and Maintenance of Plant Services	<u>Elementary</u>	<u>Secondary</u>	<u>Federal</u>	<u>Total</u>
100 <u>Personnel Services – Salaries</u>				
100 Personnel Services – Salaries				7,872,378.55
Total Personnel Services – Salaries				\$7,872,378.55
200 <u>Personnel Services – Employee Benefits</u>				
210 Group Insurance – Contracted Provider				1,862,440.98
220 Social Security Contributions				599,779.37
230 PSERS Retirement Contributions				2,655,671.19
250 Unemployment Compensation				8,822.14
260 Workers' Compensation				85,439.14
299 All Other Employee Benefits				(29,263.32)
Total Personnel Services – Employee Benefits				\$5,182,889.50
300 <u>Purchased Professional and Technical Services</u>				
329 Professional Educational Services – Other				50,462.23
330 Other Professional Services				309,765.09
340 Technical Services				43,542.90
350 Security / Safety Services				100.00
390 Other Purchased Professional and Technical Services				5,930.85
Total Purchased Professional and Technical Services				\$409,801.07
400 <u>Purchased Property Services</u>				
410 Cleaning Services				160,320.28
420 Utility Services				892,196.52
430 Repairs and Maintenance Services				1,206,362.78
440 Rentals				252,189.10
460 Extermination Services				28,169.80
Total Purchased Property Services				\$2,539,238.48
500 <u>Other Purchased Services</u>				
521 Fire Insurance				29,454.00
522 Automotive Liability Insurance				64,209.00
529 Other Insurance				2,672.00
530 Communications				175,907.90
549 Other Advertising/Public Relations			5,436.20	5,436.20
580 Travel				460.27
Total Other Purchased Services			\$5,436.20	\$278,139.37
600 <u>Supplies</u>				
610 General Supplies	880,769.49	866,402.58		1,747,172.07
620 Energy				2,408,489.49
Total Supplies	\$880,769.49	\$866,402.58		\$4,155,661.56
800 <u>Other Objects</u>				
810 Dues and Fees				1,008.00
820 Claims and Judgments Against the LEA				11,000.00
Total Other Objects				\$12,008.00
Total 2600 Operation and Maintenance of Plant Services	\$880,769.49	\$866,402.58	\$5,436.20	\$20,450,116.53

LEA : 114067002 Reading SD

Printed 2/10/2020 9:13:07 AM

General Fund (10)

2610 Supervision of Operation and Maintenance of Plant Services	<u>Elementary</u>	<u>Secondary</u>	<u>Federal</u>	<u>Total</u>
100 <u>Personnel Services – Salaries</u>				
100 Personnel Services – Salaries				321,301.42
Total Personnel Services – Salaries				\$321,301.42
200 <u>Personnel Services – Employee Benefits</u>				
210 Group Insurance – Contracted Provider				96,411.38
220 Social Security Contributions				24,012.49
230 PSERS Retirement Contributions				106,053.22
250 Unemployment Compensation				2,733.00
260 Workers' Compensation				3,266.65
Total Personnel Services – Employee Benefits				\$232,476.74
300 <u>Purchased Professional and Technical Services</u>				
329 Professional Educational Services – Other				50,462.23
Total Purchased Professional and Technical Services				\$50,462.23
800 <u>Other Objects</u>				
810 Dues and Fees				308.00
Total Other Objects				\$308.00
Total 2610 Supervision of Operation and Maintenance of Plant Services				\$604,548.39

General Fund (10)

2611 Supervision of Operation and Maintenance of Plant Services – Head of Component	<u>Elementary</u>	<u>Secondary</u>	<u>Federal</u>	<u>Total</u>
100 <u>Personnel Services – Salaries</u>				
100 Personnel Services – Salaries				69,160.80
Total Personnel Services – Salaries				\$69,160.80
200 <u>Personnel Services – Employee Benefits</u>				
210 Group Insurance – Contracted Provider				13,500.00
220 Social Security Contributions				5,241.51
230 PSERS Retirement Contributions				23,120.40
250 Unemployment Compensation				2,733.00
260 Workers' Compensation				610.80
Total Personnel Services – Employee Benefits				\$45,205.71
300 <u>Purchased Professional and Technical Services</u>				
329 Professional Educational Services – Other				50,462.23
Total Purchased Professional and Technical Services				\$50,462.23
800 <u>Other Objects</u>				
810 Dues and Fees				308.00
Total Other Objects				\$308.00
Total 2611 Supervision of Operation and Maintenance of Plant Services – Head of Component				\$165,136.74

LEA : 114067002 Reading SD

Printed 2/10/2020 9:13:07 AM

General Fund (10)

2619 Supervision of Operation and Maintenance of Plant Services – All Other Supervision	<u>Elementary</u>	<u>Secondary</u>	<u>Federal</u>	<u>Total</u>
100 <u>Personnel Services – Salaries</u>				
100 Personnel Services – Salaries				252,140.62
Total Personnel Services – Salaries				\$252,140.62
200 <u>Personnel Services – Employee Benefits</u>				
210 Group Insurance – Contracted Provider				82,911.38
220 Social Security Contributions				18,770.98
230 PSERS Retirement Contributions				82,932.82
260 Workers' Compensation				2,655.85
Total Personnel Services – Employee Benefits				\$187,271.03
Total 2619 Supervision of Operation and Maintenance of Plant Services – All Other Supervision				\$439,411.65

LEA : 114067002 Reading SD

Printed 2/10/2020 9:13:07 AM

General Fund (10)				
2620 Operation of Buildings Services	<u>Elementary</u>	<u>Secondary</u>	<u>Federal</u>	<u>Total</u>
100 <u>Personnel Services – Salaries</u>				
100 Personnel Services – Salaries				6,504,264.84
Total Personnel Services – Salaries				\$6,504,264.84
200 <u>Personnel Services – Employee Benefits</u>				
210 Group Insurance – Contracted Provider				1,465,440.40
220 Social Security Contributions				492,060.45
230 PSERS Retirement Contributions				2,173,120.95
260 Workers' Compensation				69,920.06
299 All Other Employee Benefits				(11,915.22)
Total Personnel Services – Employee Benefits				\$4,188,626.64
300 <u>Purchased Professional and Technical Services</u>				
330 Other Professional Services				190,414.61
340 Technical Services				43,542.90
390 Other Purchased Professional and Technical Services				4,614.85
Total Purchased Professional and Technical Services				\$238,572.36
400 <u>Purchased Property Services</u>				
420 Utility Services				892,196.52
430 Repairs and Maintenance Services				1,203,832.28
440 Rentals				252,189.10
460 Extermination Services				28,169.80
Total Purchased Property Services				\$2,376,387.70
500 <u>Other Purchased Services</u>				
521 Fire Insurance				29,454.00
522 Automotive Liability Insurance				64,209.00
529 Other Insurance				2,672.00
530 Communications				175,907.90
549 Other Advertising/Public Relations			5,436.20	5,436.20
580 Travel				429.73
Total Other Purchased Services			\$5,436.20	\$278,108.83
600 <u>Supplies</u>				
610 General Supplies	851,712.01	837,345.09		1,689,057.10
620 Energy				2,408,489.49
Total Supplies	\$851,712.01	\$837,345.09		\$4,097,546.59
800 <u>Other Objects</u>				
810 Dues and Fees				700.00
820 Claims and Judgments Against the LEA				11,000.00
Total Other Objects				\$11,700.00
Total 2620 Operation of Buildings Services	\$851,712.01	\$837,345.09	\$5,436.20	\$17,695,206.96

LEA : 114067002 Reading SD

Printed 2/10/2020 9:13:07 AM

General Fund (10)				
2660 Safety and Security Services	<u>Elementary</u>	<u>Secondary</u>	<u>Federal</u>	<u>Total</u>
100 <u>Personnel Services – Salaries</u>				
100 Personnel Services – Salaries				1,046,812.29
Total Personnel Services – Salaries				\$1,046,812.29
200 <u>Personnel Services – Employee Benefits</u>				
210 Group Insurance – Contracted Provider				300,589.20
220 Social Security Contributions				83,706.43
230 PSERS Retirement Contributions				376,497.02
250 Unemployment Compensation				6,089.14
260 Workers' Compensation				12,252.43
299 All Other Employee Benefits				(17,348.10)
Total Personnel Services – Employee Benefits				\$761,786.12
300 <u>Purchased Professional and Technical Services</u>				
330 Other Professional Services				119,350.48
350 Security / Safety Services				100.00
390 Other Purchased Professional and Technical Services				1,316.00
Total Purchased Professional and Technical Services				\$120,766.48
400 <u>Purchased Property Services</u>				
430 Repairs and Maintenance Services				2,530.50
Total Purchased Property Services				\$2,530.50
500 <u>Other Purchased Services</u>				
580 Travel				30.54
Total Other Purchased Services				\$30.54
600 <u>Supplies</u>				
610 General Supplies	29,057.48	29,057.49		58,114.97
Total Supplies	\$29,057.48	\$29,057.49		\$58,114.97
Total 2660 Safety and Security Services	\$29,057.48	\$29,057.49		\$1,990,040.90

LEA : 114067002 Reading SD

Printed 2/10/2020 9:13:07 AM

General Fund (10)				
2690 Other Operation and Maintenance of Plant Services	<u>Elementary</u>	<u>Secondary</u>	<u>Federal</u>	<u>Total</u>
400 <u>Purchased Property Services</u>				
410 Cleaning Services				160,320.28
Total Purchased Property Services				\$160,320.28
Total 2690 Other Operation and Maintenance of Plant Services				\$160,320.28

LEA : 114067002 Reading SD

Printed 2/10/2020 9:13:07 AM

General Fund (10)				
2700 Student Transportation Services	<u>Elementary</u>	<u>Secondary</u>	<u>Federal</u>	<u>Total</u>
100 <u>Personnel Services – Salaries</u>				
100 Personnel Services – Salaries				46,020.58
Total Personnel Services – Salaries				\$46,020.58
200 <u>Personnel Services – Employee Benefits</u>				
210 Group Insurance – Contracted Provider				17,773.38
220 Social Security Contributions				3,437.63
230 PSERS Retirement Contributions				15,250.86
260 Workers' Compensation				505.06
Total Personnel Services – Employee Benefits				\$36,966.93
500 <u>Other Purchased Services</u>				
513 Contracted Carriers			24,336.90	24,336.90
516 Student Transportation Services From the IU			363,840.49	5,370,635.80
Total Other Purchased Services			\$388,177.39	\$5,394,972.70
600 <u>Supplies</u>				
610 General Supplies				128,247.00
Total Supplies				\$128,247.00
Total 2700 Student Transportation Services			\$388,177.39	\$5,606,207.21

LEA : 114067002 Reading SD

Printed 2/10/2020 9:13:07 AM

General Fund (10)

2710 Supervision of Student Transportation Services	<u>Elementary</u>	<u>Secondary</u>	<u>Federal</u>	<u>Total</u>
100 <u>Personnel Services – Salaries</u>				
100 Personnel Services – Salaries				42,530.58
Total Personnel Services – Salaries				\$42,530.58
200 <u>Personnel Services – Employee Benefits</u>				
210 Group Insurance – Contracted Provider				17,773.38
220 Social Security Contributions				3,170.63
230 PSERS Retirement Contributions				14,084.16
260 Workers' Compensation				466.67
Total Personnel Services – Employee Benefits				\$35,494.84
500 <u>Other Purchased Services</u>				
516 Student Transportation Services From the IU			7,711.57	7,711.57
Total Other Purchased Services			\$7,711.57	\$7,711.57
Total 2710 Supervision of Student Transportation Services			\$7,711.57	\$85,736.99

LEA : 114067002 Reading SD

Printed 2/10/2020 9:13:07 AM

General Fund (10)				
2719 Supervision of Student Transportation Services – All Other Supervision	<u>Elementary</u>	<u>Secondary</u>	<u>Federal</u>	<u>Total</u>
100 <u>Personnel Services – Salaries</u>				
100 Personnel Services – Salaries				42,530.58
Total Personnel Services – Salaries				\$42,530.58
200 <u>Personnel Services – Employee Benefits</u>				
210 Group Insurance – Contracted Provider				17,773.38
220 Social Security Contributions				3,170.63
230 PSERS Retirement Contributions				14,084.16
260 Workers' Compensation				466.67
Total Personnel Services – Employee Benefits				\$35,494.84
500 <u>Other Purchased Services</u>				
516 Student Transportation Services From the IU			7,711.57	7,711.57
Total Other Purchased Services			\$7,711.57	\$7,711.57
Total 2719 Supervision of Student Transportation Services – All Other Supervision			\$7,711.57	\$85,736.99

LEA : 114067002 Reading SD

Printed 2/10/2020 9:13:07 AM

General Fund (10)

2720 Vehicle Operation Services	<u>Elementary</u>	<u>Secondary</u>	<u>Federal</u>	<u>Total</u>
500 <u>Other Purchased Services</u>				
516 Student Transportation Services From the IU			16,909.81	5,023,705.12
Total Other Purchased Services			\$16,909.81	\$5,023,705.12
600 <u>Supplies</u>				
610 General Supplies				128,247.00
Total Supplies				\$128,247.00
Total 2720 Vehicle Operation Services			\$16,909.81	\$5,151,952.12

LEA : 114067002 Reading SD

Printed 2/10/2020 9:13:07 AM

General Fund (10)

2730 Monitoring Services	<u>Elementary</u>	<u>Secondary</u>	<u>Federal</u>	<u>Total</u>
100 <u>Personnel Services – Salaries</u>				
100 Personnel Services – Salaries				3,490.00
Total Personnel Services – Salaries				\$3,490.00
200 <u>Personnel Services – Employee Benefits</u>				
220 Social Security Contributions				267.00
230 PSERS Retirement Contributions				1,166.70
260 Workers’ Compensation				38.39
Total Personnel Services – Employee Benefits				\$1,472.09
Total 2730 Monitoring Services				\$4,962.09

LEA : 114067002 Reading SD

Printed 2/10/2020 9:13:07 AM

General Fund (10)

2750 Nonpublic Transportation	<u>Elementary</u>	<u>Secondary</u>	<u>Federal</u>	<u>Total</u>
500 <u>Other Purchased Services</u>				
513 Contracted Carriers			24,336.90	24,336.90
516 Student Transportation Services From the IU			339,219.11	339,219.11
Total Other Purchased Services			\$363,556.01	\$363,556.01
Total 2750 Nonpublic Transportation			\$363,556.01	\$363,556.01

LEA : 114067002 Reading SD

Printed 2/10/2020 9:13:07 AM

General Fund (10)

2800 Support Services – Central

	<u>Elementary</u>	<u>Secondary</u>	<u>Federal</u>	<u>Total</u>
100 <u>Personnel Services – Salaries</u>				
100 Personnel Services – Salaries			173,235.60	1,158,421.07
Total Personnel Services – Salaries			\$173,235.60	\$1,158,421.07
200 <u>Personnel Services – Employee Benefits</u>				
210 Group Insurance – Contracted Provider			53,546.76	327,540.84
220 Social Security Contributions			12,899.65	86,101.00
230 PSERS Retirement Contributions			28,724.94	382,145.32
260 Workers' Compensation			1,905.64	12,741.45
Total Personnel Services – Employee Benefits			\$97,076.99	\$808,528.61
300 <u>Purchased Professional and Technical Services</u>				
310 Official / Administrative Services			649.00	20,279.14
329 Professional Educational Services – Other				98,811.04
330 Other Professional Services			14,428.20	62,730.70
340 Technical Services				611,215.55
360 Employee Training and Development Services				11,136.85
390 Other Purchased Professional and Technical Services				17,776.26
Total Purchased Professional and Technical Services			\$15,077.20	\$821,949.54
400 <u>Purchased Property Services</u>				
430 Repairs and Maintenance Services				2,240.00
Total Purchased Property Services				\$2,240.00
500 <u>Other Purchased Services</u>				
520 Insurance – General				653,967.00
530 Communications			3,861.79	78,440.78
549 Other Advertising/Public Relations			1,631.50	1,631.50
550 Printing and Binding				10,497.36
580 Travel			822.38	28,536.51
Total Other Purchased Services			\$6,315.67	\$773,073.15
600 <u>Supplies</u>				
610 General Supplies			1,369.43	71,690.26
630 Food				890.41
640 Books and Periodicals			673.00	5,140.55
650 Supplies & Fees – Technology Related				758,442.92
Total Supplies			\$2,042.43	\$836,164.14
700 <u>Property</u>				
762 Capitalized Equipment - Replacement				1,429,023.82
766 Capitalized Technology Equipment – Replacement				1,398,829.45
Total Property				\$2,827,853.27
800 <u>Other Objects</u>				
810 Dues and Fees				16,562.00
890 Miscellaneous Expenditures				6,725.80
Total Other Objects				\$23,287.80
Total 2800 Support Services – Central			\$293,747.89	\$7,251,517.58

LEA : 114067002 Reading SD

Printed 2/10/2020 9:13:07 AM

General Fund (10)				
2810 Planning, Research, Development and Evaluation Services	<u>Elementary</u>	<u>Secondary</u>	<u>Federal</u>	<u>Total</u>
100 <u>Personnel Services – Salaries</u>				
100 Personnel Services – Salaries				99,640.54
Total Personnel Services – Salaries				\$99,640.54
200 <u>Personnel Services – Employee Benefits</u>				
210 Group Insurance – Contracted Provider				18,000.00
220 Social Security Contributions				7,483.24
230 PSERS Retirement Contributions				33,056.10
260 Workers' Compensation				1,095.95
Total Personnel Services – Employee Benefits				\$59,635.29
300 <u>Purchased Professional and Technical Services</u>				
329 Professional Educational Services – Other				41,811.04
330 Other Professional Services				562.50
390 Other Purchased Professional and Technical Services				1,644.26
Total Purchased Professional and Technical Services				\$44,017.80
500 <u>Other Purchased Services</u>				
530 Communications			1,472.07	1,472.07
580 Travel				1,514.76
Total Other Purchased Services			\$1,472.07	\$2,986.83
600 <u>Supplies</u>				
610 General Supplies				2,456.02
630 Food				288.80
640 Books and Periodicals				4,241.87
650 Supplies & Fees – Technology Related				56,160.00
Total Supplies				\$63,146.69
800 <u>Other Objects</u>				
810 Dues and Fees				16,037.00
Total Other Objects				\$16,037.00
Total 2810 Planning, Research, Development and Evaluation Services			\$1,472.07	\$285,464.15

LEA : 114067002 Reading SD

Printed 2/10/2020 9:13:07 AM

General Fund (10)				
2820 Information Services	<u>Elementary</u>	<u>Secondary</u>	<u>Federal</u>	<u>Total</u>
100 <u>Personnel Services – Salaries</u>				
100 Personnel Services – Salaries				72,371.51
Total Personnel Services – Salaries				\$72,371.51
200 <u>Personnel Services – Employee Benefits</u>				
210 Group Insurance – Contracted Provider				18,000.00
220 Social Security Contributions				5,339.04
230 PSERS Retirement Contributions				23,956.40
260 Workers' Compensation				796.12
Total Personnel Services – Employee Benefits				\$48,091.56
300 <u>Purchased Professional and Technical Services</u>				
340 Technical Services				22,031.40
Total Purchased Professional and Technical Services				\$22,031.40
500 <u>Other Purchased Services</u>				
530 Communications			1,066.42	1,066.42
550 Printing and Binding				10,461.36
580 Travel				2,611.98
Total Other Purchased Services			\$1,066.42	\$14,139.76
600 <u>Supplies</u>				
610 General Supplies				9,953.30
630 Food				601.61
Total Supplies				\$10,554.91
800 <u>Other Objects</u>				
810 Dues and Fees				525.00
890 Miscellaneous Expenditures				496.55
Total Other Objects				\$1,021.55
Total 2820 Information Services			\$1,066.42	\$168,210.69

LEA : 114067002 Reading SD

Printed 2/10/2020 9:13:07 AM

General Fund (10)				
2823 Public Information Services	<u>Elementary</u>	<u>Secondary</u>	<u>Federal</u>	<u>Total</u>
100 <u>Personnel Services – Salaries</u>				
100 Personnel Services – Salaries				72,371.51
Total Personnel Services – Salaries				\$72,371.51
200 <u>Personnel Services – Employee Benefits</u>				
210 Group Insurance – Contracted Provider				18,000.00
220 Social Security Contributions				5,339.04
230 PSERS Retirement Contributions				23,956.40
260 Workers' Compensation				796.12
Total Personnel Services – Employee Benefits				\$48,091.56
300 <u>Purchased Professional and Technical Services</u>				
340 Technical Services				22,031.40
Total Purchased Professional and Technical Services				\$22,031.40
500 <u>Other Purchased Services</u>				
530 Communications			1,066.42	1,066.42
550 Printing and Binding				10,461.36
580 Travel				2,611.98
Total Other Purchased Services			\$1,066.42	\$14,139.76
600 <u>Supplies</u>				
610 General Supplies				9,953.30
630 Food				601.61
Total Supplies				\$10,554.91
800 <u>Other Objects</u>				
810 Dues and Fees				525.00
890 Miscellaneous Expenditures				496.55
Total Other Objects				\$1,021.55
Total 2823 Public Information Services			\$1,066.42	\$168,210.69

LEA : 114067002 Reading SD

Printed 2/10/2020 9:13:07 AM

General Fund (10)				
2830 Staff Services				
	<u>Elementary</u>	<u>Secondary</u>	<u>Federal</u>	<u>Total</u>
100 <u>Personnel Services – Salaries</u>				
100 Personnel Services – Salaries				444,079.33
Total Personnel Services – Salaries				\$444,079.33
200 <u>Personnel Services – Employee Benefits</u>				
210 Group Insurance – Contracted Provider				131,175.08
220 Social Security Contributions				33,119.51
230 PSERS Retirement Contributions				148,178.06
260 Workers' Compensation				4,884.48
Total Personnel Services – Employee Benefits				\$317,357.13
300 <u>Purchased Professional and Technical Services</u>				
310 Official / Administrative Services			649.00	20,279.14
329 Professional Educational Services – Other				57,000.00
330 Other Professional Services			14,428.20	62,168.20
360 Employee Training and Development Services				11,136.85
390 Other Purchased Professional and Technical Services				16,132.00
Total Purchased Professional and Technical Services			\$15,077.20	\$166,716.19
500 <u>Other Purchased Services</u>				
520 Insurance – General				653,967.00
530 Communications			1,323.30	1,323.30
550 Printing and Binding				36.00
580 Travel				22,733.74
Total Other Purchased Services			\$1,323.30	\$678,060.04
600 <u>Supplies</u>				
610 General Supplies				7,949.14
640 Books and Periodicals				225.68
Total Supplies				\$8,174.82
800 <u>Other Objects</u>				
890 Miscellaneous Expenditures				6,229.25
Total Other Objects				\$6,229.25
Total 2830 Staff Services			\$16,400.50	\$1,620,616.76

LEA : 114067002 Reading SD

Printed 2/10/2020 9:13:07 AM

General Fund (10)

2831 Supervision of Staff Services

<u>Elementary</u>	<u>Secondary</u>	<u>Federal</u>	<u>Total</u>
-------------------	------------------	----------------	--------------

300 Purchased Professional and Technical Services

329 Professional Educational Services – Other			57,000.00
---	--	--	-----------

Total Purchased Professional and Technical Services			\$57,000.00
--	--	--	--------------------

Total 2831 Supervision of Staff Services			\$57,000.00
---	--	--	--------------------

LEA : 114067002 Reading SD

Printed 2/10/2020 9:13:07 AM

General Fund (10)				
2832 Recruitment and Placement Services	<u>Elementary</u>	<u>Secondary</u>	<u>Federal</u>	<u>Total</u>
100 <u>Personnel Services – Salaries</u>				
100 Personnel Services – Salaries				444,079.33
Total Personnel Services – Salaries				\$444,079.33
200 <u>Personnel Services – Employee Benefits</u>				
210 Group Insurance – Contracted Provider				131,175.08
220 Social Security Contributions				33,119.51
230 PSERS Retirement Contributions				148,178.06
260 Workers' Compensation				4,884.48
Total Personnel Services – Employee Benefits				\$317,357.13
300 <u>Purchased Professional and Technical Services</u>				
310 Official / Administrative Services			649.00	20,279.14
330 Other Professional Services				47,740.00
390 Other Purchased Professional and Technical Services				16,132.00
Total Purchased Professional and Technical Services			\$649.00	\$84,151.14
500 <u>Other Purchased Services</u>				
520 Insurance – General				653,967.00
530 Communications			1,323.30	1,323.30
550 Printing and Binding				36.00
580 Travel				777.12
Total Other Purchased Services			\$1,323.30	\$656,103.42
600 <u>Supplies</u>				
610 General Supplies				7,949.14
640 Books and Periodicals				225.68
Total Supplies				\$8,174.82
800 <u>Other Objects</u>				
890 Miscellaneous Expenditures				6,229.25
Total Other Objects				\$6,229.25
Total 2832 Recruitment and Placement Services			\$1,972.30	\$1,516,095.09

General Fund (10)

2834 Staff Development Services – Non-Instructional, Certified Staff Only	<u>Elementary</u>	<u>Secondary</u>	<u>Federal</u>	<u>Total</u>
300 <u>Purchased Professional and Technical Services</u>				
360 Employee Training and Development Services				11,136.85
Total Purchased Professional and Technical Services				\$11,136.85
500 <u>Other Purchased Services</u>				
580 Travel				9,181.71
Total Other Purchased Services				\$9,181.71
Total 2834 Staff Development Services – Non-Instructional, Certified Staff Only				\$20,318.56

General Fund (10)

2836 Staff Development Services – Non-Instructional, Non-Certified Staff Only	<u>Elementary</u>	<u>Secondary</u>	<u>Federal</u>	<u>Total</u>
300 <u>Purchased Professional and Technical Services</u>				
330 Other Professional Services			14,428.20	14,428.20
Total Purchased Professional and Technical Services			\$14,428.20	\$14,428.20
500 <u>Other Purchased Services</u>				
580 Travel				12,774.91
Total Other Purchased Services				\$12,774.91
Total 2836 Staff Development Services – Non-Instructional, Non-Certified Staff Only			\$14,428.20	\$27,203.11

LEA : 114067002 Reading SD

Printed 2/10/2020 9:13:07 AM

General Fund (10)				
2840 Data Processing Services	<u>Elementary</u>	<u>Secondary</u>	<u>Federal</u>	<u>Total</u>
100 <u>Personnel Services – Salaries</u>				
100 Personnel Services – Salaries				369,094.09
Total Personnel Services – Salaries				\$369,094.09
200 <u>Personnel Services – Employee Benefits</u>				
210 Group Insurance – Contracted Provider				106,819.00
220 Social Security Contributions				27,259.56
230 PSERS Retirement Contributions				119,504.88
260 Workers' Compensation				4,059.26
Total Personnel Services – Employee Benefits				\$257,642.70
300 <u>Purchased Professional and Technical Services</u>				
340 Technical Services				589,184.15
Total Purchased Professional and Technical Services				\$589,184.15
400 <u>Purchased Property Services</u>				
430 Repairs and Maintenance Services				2,240.00
Total Purchased Property Services				\$2,240.00
500 <u>Other Purchased Services</u>				
530 Communications				74,578.99
549 Other Advertising/Public Relations			1,293.80	1,293.80
580 Travel				853.65
Total Other Purchased Services			\$1,293.80	\$76,726.44
600 <u>Supplies</u>				
610 General Supplies				49,962.37
650 Supplies & Fees – Technology Related				702,282.92
Total Supplies				\$752,245.29
700 <u>Property</u>				
762 Capitalized Equipment - Replacement				1,429,023.82
766 Capitalized Technology Equipment – Replacement				1,398,829.45
Total Property				\$2,827,853.27
Total 2840 Data Processing Services			\$1,293.80	\$4,874,985.94

LEA : 114067002 Reading SD

Printed 2/10/2020 9:13:07 AM

General Fund (10)				
2850 State and Federal Agency Liaison Services	<u>Elementary</u>	<u>Secondary</u>	<u>Federal</u>	<u>Total</u>
100 <u>Personnel Services – Salaries</u>				
100 Personnel Services – Salaries			173,235.60	173,235.60
Total Personnel Services – Salaries			\$173,235.60	\$173,235.60
200 <u>Personnel Services – Employee Benefits</u>				
210 Group Insurance – Contracted Provider			53,546.76	53,546.76
220 Social Security Contributions			12,899.65	12,899.65
230 PSERS Retirement Contributions			28,724.94	57,449.88
260 Workers' Compensation			1,905.64	1,905.64
Total Personnel Services – Employee Benefits			\$97,076.99	\$125,801.93
500 <u>Other Purchased Services</u>				
549 Other Advertising/Public Relations			337.70	337.70
580 Travel			822.38	822.38
Total Other Purchased Services			\$1,160.08	\$1,160.08
600 <u>Supplies</u>				
610 General Supplies			1,369.43	1,369.43
640 Books and Periodicals			673.00	673.00
Total Supplies			\$2,042.43	\$2,042.43
Total 2850 State and Federal Agency Liaison Services			\$273,515.10	\$302,240.04

LEA : 114067002 Reading SD

Printed 2/10/2020 9:13:07 AM

General Fund (10)				
2900 Other Support Services	<u>Elementary</u>	<u>Secondary</u>	<u>Federal</u>	<u>Total</u>
100 <u>Personnel Services – Salaries</u>				
100 Personnel Services – Salaries				26,762.25
Total Personnel Services – Salaries				\$26,762.25
200 <u>Personnel Services – Employee Benefits</u>				
210 Group Insurance – Contracted Provider				10,500.00
220 Social Security Contributions				1,986.75
230 PSERS Retirement Contributions				8,946.74
260 Workers' Compensation				294.44
Total Personnel Services – Employee Benefits				\$21,727.93
500 <u>Other Purchased Services</u>				
591 Services Purchased Locally				430.00
595 IU Payments By Withholding				42,566.67
Total Other Purchased Services				\$42,996.67
Total 2900 Other Support Services				\$91,486.85

LEA : 114067002 Reading SD

Printed 2/10/2020 9:13:07 AM

General Fund (10)

2910 Support Services Not Listed Elsewhere In the 2000 Series

Elementary Secondary Federal Total

100 <u>Personnel Services – Salaries</u>				
100 Personnel Services – Salaries				26,762.25
Total Personnel Services – Salaries				\$26,762.25
200 <u>Personnel Services – Employee Benefits</u>				
210 Group Insurance – Contracted Provider				10,500.00
220 Social Security Contributions				1,986.75
230 PSERS Retirement Contributions				8,946.74
260 Workers' Compensation				294.44
Total Personnel Services – Employee Benefits				\$21,727.93
500 <u>Other Purchased Services</u>				
591 Services Purchased Locally				430.00
595 IU Payments By Withholding				42,566.67
Total Other Purchased Services				\$42,996.67
Total 2910 Support Services Not Listed Elsewhere In the 2000 Series				\$91,486.85

LEA : 114067002 Reading SD

Printed 2/10/2020 9:13:13 AM

General Fund (10)

3000 Operation of Non-Instructional Services	<u>Total</u>
100 <u>Personnel Services – Salaries</u>	
100 Personnel Services – Salaries	1,321,487.43
Total Personnel Services – Salaries	\$1,321,487.43
200 <u>Personnel Services – Employee Benefits</u>	
210 Group Insurance – Contracted Provider	301,931.39
220 Social Security Contributions	99,451.00
230 PSERS Retirement Contributions	403,234.59
250 Unemployment Compensation	900.76
260 Workers' Compensation	13,775.97
Total Personnel Services – Employee Benefits	\$819,293.71
300 <u>Purchased Professional and Technical Services</u>	
322 Professional Educational Services – Ius	5,998.20
329 Professional Educational Services – Other	5,205.00
330 Other Professional Services	126,475.01
340 Technical Services	40,568.47
390 Other Purchased Professional and Technical Services	11,330.00
Total Purchased Professional and Technical Services	\$189,576.68
400 <u>Purchased Property Services</u>	
410 Cleaning Services	3,650.95
430 Repairs and Maintenance Services	14,769.42
440 Rentals	2,445.00
Total Purchased Property Services	\$20,865.37
500 <u>Other Purchased Services</u>	
510 Student Transportation Services	230,326.96
520 Insurance – General	35,836.00
550 Printing and Binding	2,065.83
580 Travel	7,842.47
591 Services Purchased Locally	138,076.02
Total Other Purchased Services	\$414,147.28
600 <u>Supplies</u>	
610 General Supplies	166,597.21
630 Food	74,094.34
640 Books and Periodicals	2,833.80
Total Supplies	\$243,525.35
700 <u>Property</u>	
790 Other Property	27,690.00
Total Property	\$27,690.00
800 <u>Other Objects</u>	
810 Dues and Fees	22,644.00
890 Miscellaneous Expenditures	8,304.81
Total Other Objects	\$30,948.81
Total 3000 Operation of Non-Instructional Services	\$3,067,534.63

LEA : 114067002 Reading SD

Printed 2/10/2020 9:13:13 AM

General Fund (10)

3200 Student Activities

	<u>Elementary</u>	<u>Secondary</u>	<u>Federal</u>	<u>Total</u>
100 <u>Personnel Services – Salaries</u>				
100 Personnel Services – Salaries				891,932.26
Total Personnel Services – Salaries				\$891,932.26
200 <u>Personnel Services – Employee Benefits</u>				
210 Group Insurance – Contracted Provider				53,773.38
220 Social Security Contributions				67,808.72
230 PSERS Retirement Contributions				260,364.77
250 Unemployment Compensation				17.56
260 Workers' Compensation				9,050.79
Total Personnel Services – Employee Benefits				\$391,015.22
300 <u>Purchased Professional and Technical Services</u>				
330 Other Professional Services				126,475.01
340 Technical Services				40,568.47
390 Other Purchased Professional and Technical Services				11,330.00
Total Purchased Professional and Technical Services				\$178,373.48
400 <u>Purchased Property Services</u>				
410 Cleaning Services				3,650.95
430 Repairs and Maintenance Services				14,769.42
440 Rentals				2,445.00
Total Purchased Property Services				\$20,865.37
500 <u>Other Purchased Services</u>				
510 Student Transportation Services				230,326.96
520 Insurance – General				35,836.00
550 Printing and Binding				2,065.83
580 Travel				7,842.47
Total Other Purchased Services				\$276,071.26
600 <u>Supplies</u>				
610 General Supplies				132,323.32
630 Food				63,938.52
640 Books and Periodicals				472.50
Total Supplies				\$196,734.34
700 <u>Property</u>				
790 Other Property				27,690.00
Total Property				\$27,690.00
800 <u>Other Objects</u>				
810 Dues and Fees				22,644.00
890 Miscellaneous Expenditures				7,279.81
Total Other Objects				\$29,923.81
Total 3200 Student Activities				\$2,012,605.74

LEA : 114067002 Reading SD

Printed 2/10/2020 9:13:13 AM

General Fund (10)				
3300 Community Services				
	<u>Elementary</u>	<u>Secondary</u>	<u>Federal</u>	<u>Total</u>
100 <u>Personnel Services – Salaries</u>				
100 Personnel Services – Salaries			409,155.19	429,555.17
Total Personnel Services – Salaries			\$409,155.19	\$429,555.17
200 <u>Personnel Services – Employee Benefits</u>				
210 Group Insurance – Contracted Provider			242,158.01	248,158.01
220 Social Security Contributions			30,136.15	31,642.28
230 PSERS Retirement Contributions			68,091.95	142,869.82
250 Unemployment Compensation				883.20
260 Workers' Compensation			4,500.82	4,725.18
Total Personnel Services – Employee Benefits			\$344,886.93	\$428,278.49
300 <u>Purchased Professional and Technical Services</u>				
322 Professional Educational Services – Ius			5,998.20	5,998.20
329 Professional Educational Services – Other			5,205.00	5,205.00
Total Purchased Professional and Technical Services			\$11,203.20	\$11,203.20
500 <u>Other Purchased Services</u>				
591 Services Purchased Locally				138,076.02
Total Other Purchased Services				\$138,076.02
600 <u>Supplies</u>				
610 General Supplies			34,273.89	34,273.89
630 Food			10,155.82	10,155.82
640 Books and Periodicals			2,361.30	2,361.30
Total Supplies			\$46,791.01	\$46,791.01
800 <u>Other Objects</u>				
890 Miscellaneous Expenditures			1,025.00	1,025.00
Total Other Objects			\$1,025.00	\$1,025.00
Total 3300 Community Services			\$813,061.33	\$1,054,928.89

LEA : 114067002 Reading SD

Printed 2/10/2020 9:13:18 AM

General Fund (10)	
4000 Facilities Acquisition, Construction and Improvement Services	<u>Total</u>
300 <u>Purchased Professional and Technical Services</u>	
330 Other Professional Services	630,895.72
Total Purchased Professional and Technical Services	\$630,895.72
400 <u>Purchased Property Services</u>	
450 Construction Services	4,531,551.57
Total Purchased Property Services	\$4,531,551.57
600 <u>Supplies</u>	
610 General Supplies	270,838.92
Total Supplies	\$270,838.92
700 <u>Property</u>	
752 Capital Equipment – Original and Additional	54,430.06
Total Property	\$54,430.06
Total 4000 Facilities Acquisition, Construction and Improvement Services	\$5,487,716.27

LEA : 114067002 Reading SD

Printed 2/10/2020 9:13:18 AM

General Fund (10)

4400 Architecture and Engineering Services / Educational Specifications – Improvements	<u>Elementary</u>	<u>Secondary</u>	<u>Federal</u>	<u>Total</u>
300 <u>Purchased Professional and Technical Services</u>				
330 Other Professional Services				630,895.72
Total Purchased Professional and Technical Services				\$630,895.72
Total 4400 Architecture and Engineering Services / Educational Specifications – Improvements				\$630,895.72

General Fund (10)

4600 Existing Building Improvement Services	<u>Elementary</u>	<u>Secondary</u>	<u>Federal</u>	<u>Total</u>
400 <u>Purchased Property Services</u>				
450 Construction Services				4,531,551.57
Total Purchased Property Services				\$4,531,551.57
600 <u>Supplies</u>				
610 General Supplies				270,838.92
Total Supplies				\$270,838.92
700 <u>Property</u>				
752 Capital Equipment – Original and Additional				54,430.06
Total Property				\$54,430.06
Total 4600 Existing Building Improvement Services				\$4,856,820.55

LEA : 114067002 Reading SD

Printed 2/10/2020 9:13:21 AM

General Fund (10)

5000 Other Expenditures and Financing Uses		<u>Total</u>
800 <u>Other Objects</u>		
830 Interest		11,488,485.04
880 Refunds of Prior Years' Receipts		3,237.26
Total Other Objects		\$11,491,722.30
900 <u>Other Uses of Funds</u>		
910 Redemption of Principal		12,575,000.00
939 Other Fund Transfers		17,000,000.00
Total Other Uses of Funds		\$29,575,000.00
Total 5000 Other Expenditures and Financing Uses		\$41,066,722.30

LEA : 114067002 Reading SD

Printed 2/10/2020 9:13:21 AM

General Fund (10)				
5100 Debt Service / Other Expenditures and Financing Uses	<u>Elementary</u>	<u>Secondary</u>	<u>Federal</u>	<u>Total</u>
800 <u>Other Objects</u>				
830 Interest				11,488,485.04
880 Refunds of Prior Years' Receipts				3,237.26
Total Other Objects				\$11,491,722.30
900 <u>Other Uses of Funds</u>				
910 Redemption of Principal				12,575,000.00
Total Other Uses of Funds				\$12,575,000.00
Total 5100 Debt Service / Other Expenditures and Financing Uses				\$24,066,722.30

General Fund (10)				
5110 Debt Service	<u>Elementary</u>	<u>Secondary</u>	<u>Federal</u>	<u>Total</u>
800 <u>Other Objects</u>				
830 Interest				11,488,485.04
Total Other Objects				\$11,488,485.04
900 <u>Other Uses of Funds</u>				
910 Redemption of Principal				12,575,000.00
Total Other Uses of Funds				\$12,575,000.00
Total 5110 Debt Service				\$24,063,485.04

LEA : 114067002 Reading SD

Printed 2/10/2020 9:13:21 AM

General Fund (10)

5130 Refund of Prior Year Revenues / Receipts	<u>Elementary</u>	<u>Secondary</u>	<u>Federal</u>	<u>Total</u>
800 <u>Other Objects</u>				
880 Refunds of Prior Years' Receipts				3,237.26
Total Other Objects				\$3,237.26
Total 5130 Refund of Prior Year Revenues / Receipts				\$3,237.26

LEA : 114067002 Reading SD

Printed 2/10/2020 9:13:21 AM

General Fund (10)

5200 Interfund Transfers – Out	<u>Elementary</u>	<u>Secondary</u>	<u>Federal</u>	<u>Total</u>
900 <u>Other Uses of Funds</u>				
939 Other Fund Transfers				17,000,000.00
Total Other Uses of Funds				\$17,000,000.00
Total 5200 Interfund Transfers – Out				\$17,000,000.00

LEA : 114067002 Reading SD

Printed 2/10/2020 9:13:21 AM

General Fund (10)

5230 Capital Projects Fund Transfers	<u>Elementary</u>	<u>Secondary</u>	<u>Federal</u>	<u>Total</u>
900 <u>Other Uses of Funds</u>				
939 Other Fund Transfers				12,000,000.00
Total Other Uses of Funds				\$12,000,000.00
Total 5230 Capital Projects Fund Transfers				\$12,000,000.00

LEA : 114067002 Reading SD

Printed 2/10/2020 9:13:21 AM

General Fund (10)

5240 Debt Service Fund Transfers	<u>Elementary</u>	<u>Secondary</u>	<u>Federal</u>	<u>Total</u>
900 <u>Other Uses of Funds</u>				
939 Other Fund Transfers				5,000,000.00
Total Other Uses of Funds				\$5,000,000.00
Total 5240 Debt Service Fund Transfers				\$5,000,000.00

LEA : 114067002 Reading SD

Printed 2/10/2020 9:13:15 AM

Other Comptroller-Approved Special Revenue Funds (28)

3000 Operation of Non-Instructional Services	Total
400 <u>Purchased Property Services</u>	
440 Rentals	834.34
Total Purchased Property Services	\$834.34
500 <u>Other Purchased Services</u>	
591 Services Purchased Locally	13,461.26
596 Direct Payments To Intermediate Units	24,378.09
Total Other Purchased Services	\$37,839.35
600 <u>Supplies</u>	
610 General Supplies	36,375.77
630 Food	261.25
Total Supplies	\$36,637.02
800 <u>Other Objects</u>	
810 Dues and Fees	960.00
890 Miscellaneous Expenditures	52,250.24
Total Other Objects	\$53,210.24
Total 3000 Operation of Non-Instructional Services	\$128,520.95

LEA : 114067002 Reading SD

Printed 2/10/2020 9:13:15 AM

Other Comptroller-Approved Special Revenue Funds (28)

3300 Community Services	<u>Elementary</u>	<u>Secondary</u>	<u>Federal</u>	<u>Total</u>
400 <u>Purchased Property Services</u>				
440 Rentals				834.34
Total Purchased Property Services				\$834.34
500 <u>Other Purchased Services</u>				
591 Services Purchased Locally				13,461.26
596 Direct Payments To Intermediate Units				24,378.09
Total Other Purchased Services				\$37,839.35
600 <u>Supplies</u>				
610 General Supplies				36,375.77
630 Food				261.25
Total Supplies				\$36,637.02
800 <u>Other Objects</u>				
810 Dues and Fees				960.00
890 Miscellaneous Expenditures				52,250.24
Total Other Objects				\$53,210.24
Total 3300 Community Services				\$128,520.95

LEA : 114067002 Reading SD

Printed 2/10/2020 9:13:33 AM

	<u>General Fund(10)</u>	<u>Public Purpose Trust(27)</u>	<u>Other Compt Approved</u> <u>(28)</u>	<u>Athletic / Activity(29)</u>	<u>Capital Reserve (690.</u> <u>1850)(31)</u>
1000 <u>Instruction</u>					
1100 Regular Programs - Elementary / Secondary	99,544,761.37				
1200 Special Programs - Elementary / Secondary	48,633,657.42				
1300 Vocational Education	5,247,073.96				
1400 Other Instructional Programs - Elementary / Secondary	3,117,892.46				
1500 Nonpublic School Programs	616,415.61				
1600 Adult Education Programs	10,472.00				
1800 Pre-Kindergarten	2,017,533.78				
Total Instruction	\$159,187,806.60				
2000 <u>Support Services</u>					
2100 Support Services - Students	10,778,610.48				
2200 Support Services - Instructional Staff	6,004,905.27				
2300 Support Services - Administration	19,588,756.16				
2400 Support Services - Pupil Health	4,073,755.70				
2500 Support Services - Business	2,018,608.78				
2600 Operation and Maintenance of Plant Services	20,450,116.53				
2700 Student Transportation Services	5,606,207.21				
2800 Support Services - Central	7,251,517.58				
2900 Other Support Services	91,486.85				
Total Support Services	\$75,863,964.56				
3000 <u>Operation of Non-Instructional Services</u>					
3200 Student Activities	2,012,605.74				
3300 Community Services	1,054,928.89		128,520.95		
Total Operation of Non-Instructional Services	\$3,067,534.63		\$128,520.95		
4000 <u>Facilities Acquisition, Construction and Improvement Services</u>					
4400 Architecture and Engineering Services / Educational Specifications - Improvements	630,895.72				
4600 Existing Building Improvement Services	4,856,820.55				
Total Facilities Acquisition, Construction and Improvement Services	\$5,487,716.27				
5000 <u>Other Expenditures and Financing Uses</u>					
5100 Debt Service / Other Expenditures and Financing Uses	24,066,722.30				
5200 Interfund Transfers - Out	17,000,000.00				
Total Other Expenditures and Financing Uses	\$41,066,722.30				
TOTAL ACTUAL EXPENDITURES & OTHER FINANCING USES	\$284,673,744.36		\$128,520.95		

LEA : 114067002 Reading SD

Printed 2/10/2020 9:13:33 AM

	<u>Capital Reserve (1431)(32)</u>	<u>Other Capital Projects Fund(39)</u>	<u>Debt Service(40)</u>	<u>Permanent(90)</u>	<u>Total</u>
1000 <u>Instruction</u>					
1100 Regular Programs - Elementary / Secondary					99,544,761.37
1200 Special Programs - Elementary / Secondary					48,633,657.42
1300 Vocational Education					5,247,073.96
1400 Other Instructional Programs - Elementary / Secondary					3,117,892.46
1500 Nonpublic School Programs					616,415.61
1600 Adult Education Programs					10,472.00
1800 Pre-Kindergarten					2,017,533.78
Total Instruction					\$159,187,806.60
2000 <u>Support Services</u>					
2100 Support Services - Students					10,778,610.48
2200 Support Services - Instructional Staff					6,004,905.27
2300 Support Services - Administration					19,588,756.16
2400 Support Services - Pupil Health					4,073,755.70
2500 Support Services - Business					2,018,608.78
2600 Operation and Maintenance of Plant Services					20,450,116.53
2700 Student Transportation Services					5,606,207.21
2800 Support Services - Central					7,251,517.58
2900 Other Support Services					91,486.85
Total Support Services					\$75,863,964.56
3000 <u>Operation of Non-Instructional Services</u>					
3200 Student Activities					2,012,605.74
3300 Community Services					1,183,449.84
Total Operation of Non-Instructional Services					\$3,196,055.58
4000 <u>Facilities Acquisition, Construction and Improvement Services</u>					
4400 Architecture and Engineering Services / Educational Specifications - Improvements					630,895.72
4600 Existing Building Improvement Services					4,856,820.55
Total Facilities Acquisition, Construction and Improvement Services					\$5,487,716.27
5000 <u>Other Expenditures and Financing Uses</u>					
5100 Debt Service / Other Expenditures and Financing Uses					24,066,722.30
5200 Interfund Transfers - Out					17,000,000.00
Total Other Expenditures and Financing Uses					\$41,066,722.30
TOTAL ACTUAL EXPENDITURES & OTHER FINANCING USES					\$284,802,265.31

LEA : 114067002 Reading SD

Printed 2/10/2020 9:13:39 AM

PSERS Salary Data (Salary Data should relate to the General Fund only)

Amount	Description	Amount
	Total Salary Base for salaries subject to PSERS withholding	88,576,650.92
	Total Federally Funded salaries subject to PSERS withholding	8,513,406.49

Title I Expenditure Data

Amount	Description	Amount
	Expenditures Funded with Current Title I Funds	11,502,364.48
	Expenditures Funded with Carry over Title I Funds	680,546.26
Total Title I Expenditure Data		\$12,182,910.74

Benefits for Staff Relative to Collective
Bargaining Agreements

	OBJECT	COVERED	NOT COVERED	TOTAL
10 General Fund				
	211 Medical Insurance			
	212 Dental Insurance			
	215 Eye Care Insurance			
	216 Prescription Insurance			
	271 Self-Insurance Medical Benefits	27,847,899.97		27,847,899.97
	272 Self-Insurance Dental Benefits			
	275 Self-Insurance Eye Care Benefits			
	276 Self-Insurance Prescription Benefits			
	FUND TOTAL	\$27,847,899.97		\$27,847,899.97
50 Enterprise Fund	No Self Insurance data to report			
	211 Medical Insurance			
	212 Dental Insurance			
	215 Eye Care Insurance			
	216 Prescription Insurance			
	271 Self-Insurance Medical Benefits			
	272 Self-Insurance Dental Benefits			
	275 Self-Insurance Eye Care Benefits			
	276 Self-Insurance Prescription Benefits			
	FUND TOTAL			
60 Internal Service Fund	No Self Insurance data to report			
	211 Medical Insurance			
	212 Dental Insurance			
	215 Eye Care Insurance			
	216 Prescription Insurance			
	271 Self-Insurance Medical Benefits			
	272 Self-Insurance Dental Benefits			
	275 Self-Insurance Eye Care Benefits			
	276 Self-Insurance Prescription Benefits			
	FUND TOTAL			
Total of All Funds		\$27,847,899.97		\$27,847,899.97

LEA : 114067002 Reading SD

Printed 2/10/2020 9:13:44 AM

Function	Special Education (Prior Year)	Nonspecial Education (Prior Year)	Total (Prior Year)	Special Education (Current Year)	Nonspecial Education (Current Year)	Total (Current Year)
2120 Guidance Services	171,885.63	4,476,973.73	4,648,859.36	149,903.10	4,986,275.88	5,136,178.98
2140 Psychological Services	873,511.29	1,358,659.95	2,232,171.24	852,457.86	1,668,992.63	2,521,450.49
2150 Speech Pathology and Audiology Services						
2160 Social Work Services		488,439.27	488,439.27		1,324,514.76	1,324,514.76
2260 Instruction and Curriculum Development Services	33,819.60	677,888.48	711,708.08	60,269.30	1,145,113.64	1,205,382.94
2350 Legal and Accounting Services	297,774.37	708,220.47	1,005,994.84	165,287.48	858,095.61	1,023,383.09
2420 Medical Services		632,050.71	632,050.71		864,739.47	864,739.47
2440 Nursing Services	169,028.36	2,327,340.97	2,496,369.33	178,242.49	2,575,135.85	2,753,378.34
2700 Student Transportation Services	3,487,021.21	1,912,201.53	5,399,222.74	3,556,428.73	2,049,778.48	5,606,207.21
Total	\$5,033,040.46	\$12,581,775.11	\$17,614,815.57	\$4,962,588.96	\$15,472,646.32	\$20,435,235.28

LEA : 114067002 Reading SD

Printed 2/10/2020 9:13:47 AM

(PRINCIPAL AMOUNTS ONLY)								
<u>GOVERNMENTAL FUNDS/ ACTIVITIES</u>	Short-Term Borrowing	General Obligation Bonds/Notes	Authority Building Obligations	Other Long-Term Debt	Other Post- Employment Benefits (OPEB)	Compensated Absences	Net Pension Liability	Total
1. Debt at Beginning of Fiscal Year		280,077,014.00			169,265,944.00	2,562,936.26	327,437,000.00	779,342,894.26
2. Additional Debt Incurred During Year					50,779,783.00		13,097,480.00	63,877,263.00
3. Retirements and Repayments		12,575,000.00				153,670.89		12,728,670.89
4. Debt at End of Fiscal Year		267,502,014.00			220,045,727.00	2,409,265.37	340,534,480.00	830,491,486.37
5. Accreted Interest at End Of Fiscal Year		33,664,373.00						33,664,373.00
6. Total Debt and Accreted Interest		301,166,387.00			220,045,727.00	2,409,265.37	340,534,480.00	864,155,859.37
7. Current Portion P&I - Due within 1 year		24,071,824.00						24,071,824.00
8. Interest Paid during current fiscal year		11,488,487.00						11,488,487.00

(PRINCIPAL AMOUNTS ONLY)							
PROPRIETARY FUNDS							
1. Debt at Beginning of Fiscal Year							
2. Additional Debt Incurred During Year							
3. Retirements and Repayments							
4. Debt at End of Fiscal Year							
5. Accreted Interest at End Of Fiscal Year							
6. Total Debt and Accreted Interest							
7. Current Portion P&I - Due within 1 year							
8. Interest Paid during current fiscal year							

LEA : 114067002 Reading SD

Printed 2/10/2020 9:13:47 AM

Total Principal and Interest Payments Made by Your School - All Funds

Function	Fund		Principal (910)	Principal (920)	Interest (830)	Total (Principal +Interest)	Misc Other Uses (990)
5110	10	General Fund	12,575,000.00		11,488,485.04	24,063,485.04	
5110	20	Special Revenue Funds					
5110	30	Capital Projects Funds					
5110	40	Debt Service Fund					
5110	90	Permanent Fund					
5120	10	General Fund					
5120	20	Special Revenue Funds					
5120	30	Capital Projects Funds					
5120	40	Debt Service Fund					
Total Debt Payments - Governmental Funds			\$12,575,000.00		\$11,488,485.04	\$24,063,485.04	

Function	Fund		Principal (910)	Principal (920)	Interest (830)	Total (Principal +Interest)
5110	50	Enterprise Fund				
5110	60	Internal Service Fund				
5120	50	Enterprise Fund				
5120	60	Internal Service Fund				
Total Debt Payments - Proprietary Funds						

LEA : 114067002 Reading SD

Printed 2/10/2020 9:13:47 AM

Debt Details
Governmental Funds/ Activities

Debt Category	Debt Issue Date (MM/YYYY)	Principal Amounts Only				Current Portion Due Within One Year (Principal and Interest)	Interest Paid During Fiscal Year
		Debt at Beginning of Fiscal Year	Additions	Reductions / Repayments	Debt at End of Fiscal Year		
General Obligation Bonds/Notes – CIB	08/2017	91,090,000.00		5,000.00	91,085,000.00	4,287,525.00	4,282,600.00
General Obligation Bonds/Notes – CIB	10/2015	82,740,000.00		1,880,000.00	80,860,000.00	5,696,113.00	3,815,113.00
General Obligation Bonds/Notes – CIB	10/2015	2,730,000.00			2,730,000.00	112,613.00	112,613.00
General Obligation Bonds/Notes – CIB	10/2015	7,145,000.00		1,660,000.00	5,485,000.00	2,014,250.00	357,250.00
General Obligation Bonds/Notes – CIB	05/2014	620,000.00			620,000.00	18,600.00	18,600.00
General Obligation Bonds/Notes – CIB	05/2014	8,900,000.00		125,000.00	8,775,000.00	403,738.00	282,488.00
General Obligation Bonds/Notes – CIB	07/2014	9,690,000.00		70,000.00	9,620,000.00	425,766.00	352,166.00
General Obligation Bonds/Notes – CIB	05/2012	8,385,000.00		945,000.00	7,440,000.00	1,190,856.00	242,119.00
General Obligation Bonds/Notes – CIB	07/2011	33,875,000.00		6,230,000.00	27,645,000.00	7,784,950.00	1,551,450.00
General Obligation Bonds/Notes – CIB	07/2011	7,260,000.00		1,660,000.00	5,600,000.00	2,137,413.00	474,088.00
General Obligation Bonds/Notes – CAB	07/2003	27,642,014.00			27,642,014.00		
General Obligation Bonds/Notes – CAB	07/2003						
Compensated Absences		2,562,936.26		153,670.89	2,409,265.37		
Other Post-Employment Benefits (OPEB)		169,265,944.00	50,779,783.00		220,045,727.00		
Net Pension Liability		327,437,000.00	13,097,480.00		340,534,480.00		
Totals for Debt Entered:		\$779,342,894.26	\$63,877,263.00	\$12,728,670.89	\$830,491,486.37	\$24,071,824.00	\$11,488,487.00

LEA : 114067002 Reading SD

Printed 2/10/2020 9:13:47 AM

Accreted Interest Detail
Governmental Funds/ Activities

Debt Category	Debt Issue Date (MM/YYYY)	Beginning Accreted Interest	Additions	Reductions	Ending Accreted Interest	Ending bond Principal	Ending Principal Plus Accreted Interest
General Obligation Bonds/Notes – CAB	07/2003					27,642,014.00	27,642,014.00
General Obligation Bonds/Notes – CAB	07/2003	30,679,908.00	2,984,465.00		33,664,373.00		33,664,373.00
Totals for Debt Entered:		\$30,679,908.00	\$2,984,465.00		\$33,664,373.00	\$27,642,014.00	\$61,306,387.00

LEA : 114067002 Reading SD

Printed 2/10/2020 9:13:49 AM

General Fund (10)

Section 1: Tuition/Purchased Services as Reported within Expenditure Detail	Amount
Tuition Reported in General Fund Expenditures 1000-560	28,063,266.93
Purchased Services in General Fund Expenditures 1000-594 and 1000-597	1,199.42
Section 1 Total	\$28,064,466.35

Section 2: Tuition Paid to Institution Types During Fiscal Year	Tuition Paid For Nonspecial Education	Tuition Paid For Special Education	Total
1 1306 Institutions			
2 Institutionalized Children's Programs	653,745.81	1,322,539.47	1,976,285.28
3 Juveniles Incarcerated in Adult Facilities			
4 Residential Treatment Facilities			
5 Other Local Education Agencies			
6 Brick and Mortar Charter Schools	2,477,734.52	2,056,731.80	4,534,466.32
7 Cyber Charter Schools	3,432,992.26	3,266,380.78	6,699,373.04
8 Career and Technology Centers	5,247,073.96		5,247,073.96
9 Approved Private Schools			
10 PA Chartered Schools for the Deaf and Blind	65,048.80	8,718,975.77	8,784,024.57
11 Private Residential Rehabilitative Institutions	396,876.92	426,366.26	823,243.18
12 Juvenile Detention Centers			
13 Special Program Jointures			
14 Other Tuition Not Included Elsewhere In This Section			
Section 2 Total	\$12,273,472.27	\$15,790,994.08	\$28,064,466.35

LEA : 114067002 Reading SD

Printed 2/10/2020 9:13:51 AM

Food Service / Cafeteria Operations Fund (51)

3000 Operation of Non-Instructional Services		Total
100 Personnel Services – Salaries		
100 Personnel Services – Salaries		3,731,552.15
Total Personnel Services – Salaries		\$3,731,552.15
200 Personnel Services – Employee Benefits		
210 Group Insurance – Contracted Provider		1,442,375.51
220 Social Security Contributions		200,843.92
230 PSERS Retirement Contributions		997,250.90
250 Unemployment Compensation		6,132.88
260 Workers' Compensation		29,871.87
299 All Other Employee Benefits		226,941.00
Total Personnel Services – Employee Benefits		\$2,903,416.08
400 Purchased Property Services		
430 Repairs and Maintenance Services		125,806.70
Total Purchased Property Services		\$125,806.70
500 Other Purchased Services		
530 Communications		118.07
540 Advertising		2,510.85
550 Printing and Binding		2,342.00
570 Food Service Management		164,777.69
580 Travel		3,553.39
Total Other Purchased Services		\$173,302.00
600 Supplies		
610 General Supplies		621,763.95
620 Energy		139,432.07
630 Food		6,329,794.98
650 Supplies & Fees – Technology Related		18,085.00
Total Supplies		\$7,109,076.00
700 Property		
740 Depreciation		137,051.00
Total Property		\$137,051.00
900 Other Uses of Funds		
900 Other Uses of Funds		631,227.86
Total Other Uses of Funds		\$631,227.86
Total 3000 Operation of Non-Instructional Services		\$14,811,431.79

LEA : 114067002 Reading SD

Printed 2/10/2020 9:13:51 AM

Food Service / Cafeteria Operations Fund (51)

3100 Food Services	Elementary	Secondary	Federal	Total
100 <u>Personnel Services – Salaries</u>				
100 Personnel Services – Salaries				3,731,552.15
Total Personnel Services – Salaries				\$3,731,552.15
200 <u>Personnel Services – Employee Benefits</u>				
210 Group Insurance – Contracted Provider				1,442,375.51
220 Social Security Contributions				200,843.92
230 PSERS Retirement Contributions				997,250.90
250 Unemployment Compensation				6,132.88
260 Workers' Compensation				29,871.87
299 All Other Employee Benefits				226,941.00
Total Personnel Services – Employee Benefits				\$2,903,416.08
400 <u>Purchased Property Services</u>				
430 Repairs and Maintenance Services				125,806.70
Total Purchased Property Services				\$125,806.70
500 <u>Other Purchased Services</u>				
530 Communications				118.07
540 Advertising				2,510.85
550 Printing and Binding				2,342.00
570 Food Service Management				164,777.69
580 Travel				3,553.39
Total Other Purchased Services				\$173,302.00
600 <u>Supplies</u>				
610 General Supplies				621,763.95
620 Energy				139,432.07
630 Food				6,329,794.98
650 Supplies & Fees – Technology Related				18,085.00
Total Supplies				\$7,109,076.00
700 <u>Property</u>				
740 Depreciation				137,051.00
Total Property				\$137,051.00
900 <u>Other Uses of Funds</u>				
900 Other Uses of Funds				631,227.86
Total Other Uses of Funds				\$631,227.86
Total 3100 Food Services				\$14,811,431.79

	<u>Food Service(51)</u>	<u>Child Care Operations(52)</u>	<u>Other Enterprise(58)</u>	<u>Internal Service(60)</u>	<u>Total</u>
3000 <u>Operation of Non-Instructional Services</u>					
3100 Food Services	14,811,431.79				14,811,431.79
Total Operation of Non-Instructional Services	\$14,811,431.79				\$14,811,431.79
TOTAL ACTUAL EXPENDITURES & OTHER FINANCING USES	\$14,811,431.79				\$14,811,431.79

LEA : 114067002 Reading SD

Printed 2/10/2020 9:14:00 AM

Fund	School	School Number	Local Personnel	Local Nonpersonnel	State Personnel	State Nonpersonnel	Federal Personnel	Federal Nonpersonnel	Total	Explanation
10										
	Amanda E Stout El Sch	840	1,351,749.00	276,234.00	6,046,983.00	1,121,101.00	1,275,970.00	223,902.00	10,295,939.00	
	Central MS	8117	2,515,306.00	473,751.00	10,601,418.00	1,933,525.00	914,863.00	581,372.00	17,020,235.00	
	Glenside El Sch	844	709,818.00	124,943.00	3,288,276.00	517,344.00	363,498.00	64,148.00	5,068,027.00	
	Lauers Park El Sch	852	1,151,297.00	219,657.00	5,364,944.00	887,716.00	715,418.00	221,786.00	8,560,818.00	
	Millmont El Sch	8247	1,065,264.00	200,167.00	4,825,615.00	850,763.00	1,180,629.00	239,187.00	8,361,625.00	
	Northeast MS	858	1,550,707.00	319,270.00	6,535,875.00	1,301,612.00	743,556.00	261,046.00	10,712,066.00	
	Northwest El Sch	5206	1,145,087.00	196,826.00	5,280,820.00	803,228.00	772,989.00	138,618.00	8,337,568.00	
	Northwest MS	856	1,241,323.00	249,002.00	5,231,877.00	1,012,807.00	864,236.00	401,734.00	9,000,979.00	
	Reading SHS	8116	6,113,466.00	1,340,325.00	25,752,253.00	5,472,685.00	3,589,783.00	1,374,931.00	43,643,443.00	
	Riverside El Sch	845	1,096,839.00	234,214.00	5,029,290.00	952,437.00	1,267,669.00	337,765.00	8,918,214.00	
	Sixteenth & Haak El Sch	5028	934,040.00	181,686.00	4,314,450.00	737,720.00	565,037.00	104,882.00	6,837,815.00	
	Southern MS	855	1,136,643.00	208,781.00	4,790,654.00	855,047.00	513,489.00	323,981.00	7,828,595.00	
	Southwest MS	857	1,029,961.00	178,891.00	4,341,008.00	732,966.00	740,230.00	196,471.00	7,219,527.00	
	Tenth & Green El Sch	5026	959,384.00	179,677.00	4,370,484.00	739,827.00	740,069.00	172,049.00	7,161,490.00	
	Tenth & Penn El Sch	7484	852,289.00	175,009.00	3,975,749.00	706,172.00	399,128.00	104,450.00	6,212,797.00	
	Thirteenth & Green El Sch	5027	859,172.00	165,943.00	3,756,343.00	674,531.00	815,205.00	154,220.00	6,425,414.00	
	Thirteenth & Union El Sch	832	1,293,713.00	233,628.00	5,670,260.00	947,197.00	1,104,066.00	199,176.00	9,448,040.00	
	Twelfth & Marion El Sch	5025	1,031,296.00	179,546.00	4,689,097.00	728,687.00	782,807.00	177,150.00	7,588,583.00	
	Tyson-Schoener El Sch	831	1,034,021.00	204,484.00	4,730,512.00	838,823.00	870,910.00	190,358.00	7,869,108.00	
Total			27,071,375.00	5,342,034.00	118,595,908.00	21,814,188.00	18,219,552.00	5,467,226.00	196,510,283.00	